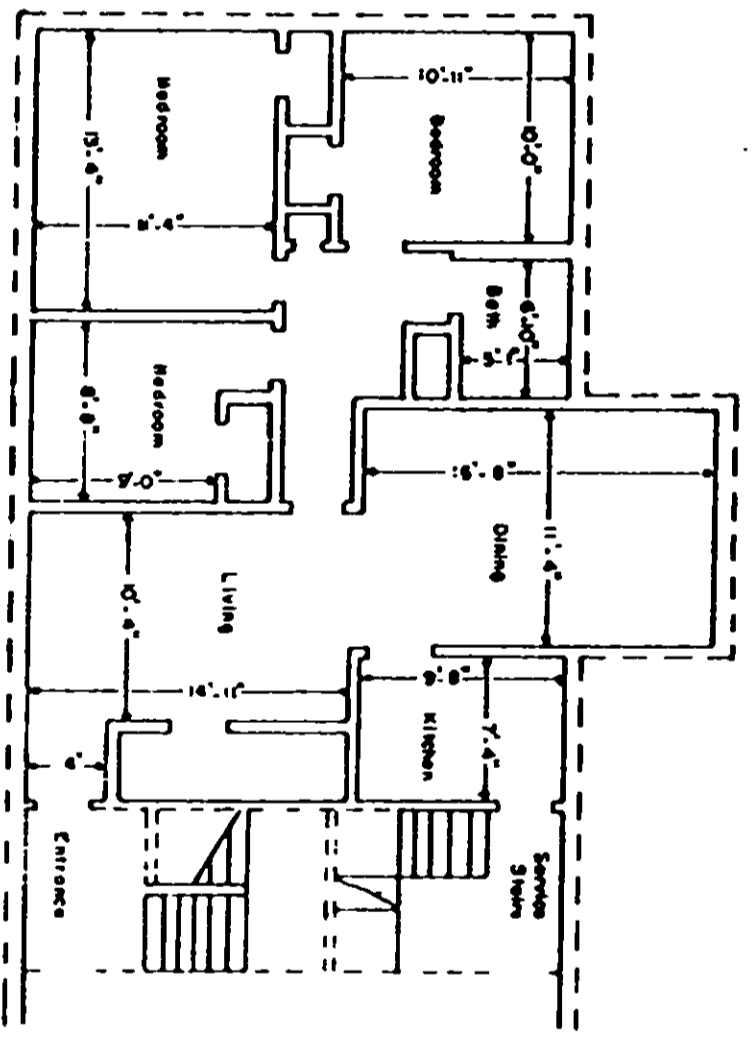


15 2 8 0

2-AV 8237

VCL 1098 PAGE 836

Boundary of unit ———
 Common Elements - - - -
 Stairs - Limited Common Elements [] [] [] [] [] [] []



TYPICAL UNIT SCHEMATIC OF
 FLOOR PLAN FOR 3 BEDROOMS
 LEWIS VILLAGE HORIZONTAL PROPERTY REGIME

GREENVILLE COUNTY
 GREENVILLE, SOUTH CAROLINA
 Scale 1" = 10' February, 1979
 DALTON A. NEVES CO., ENGINEERS
 GREENVILLE, S. C.

This is to certify that this is a
 Typical Section of the following
 units of Lewis Village Horizontal
 Property Regime.

SA
R. W. Dutton
 S.C. Reg. No. 916