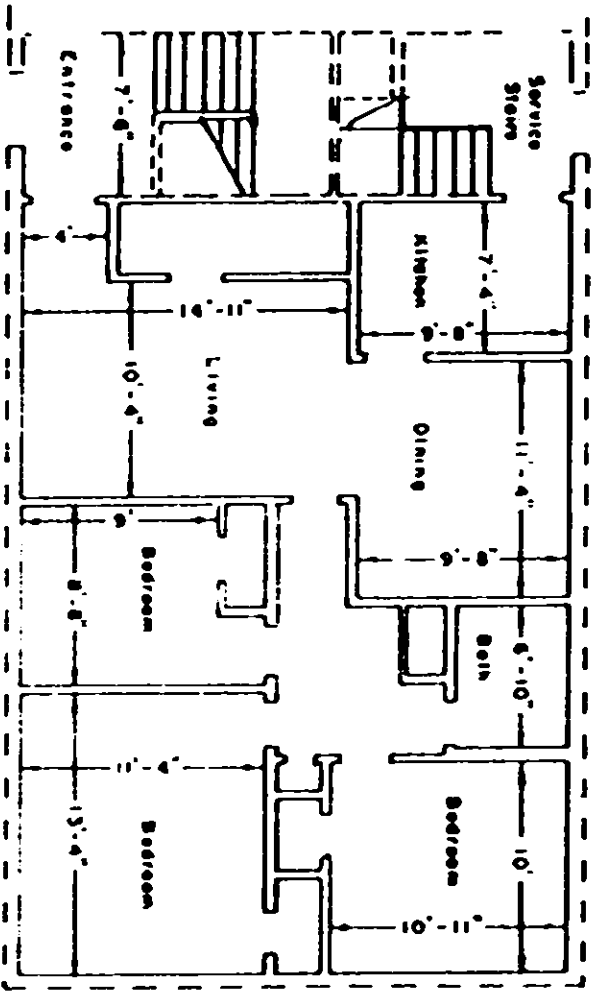


830

Boundary of unit ———
 Common Elements - - - -
 Stairs - Limited Common Elements [] [] [] [] []



TYPICAL UNIT SCHEMATIC OF
 FLOOR PLAN FOR 3 BEDROOMS

LEWIS VILLAGE HORIZONTAL PROPERTY REGIME
 GREENVILLE COUNTY
 GREENVILLE SOUTH CAROLINA

Scale 1" = 10'
 February, 1979
 DALTON & NEVES CO., ENGINEERS
 GREENVILLE, S. C.

This is to certify that this is a
 Typical Section of the following
 units of Lewis Village Horizontal
 Property Regime:
 1A, 1B, 1C, 1D, 5B, 5C, 5D

H.W. Dawson

S C Reg No 916

2-A 8234