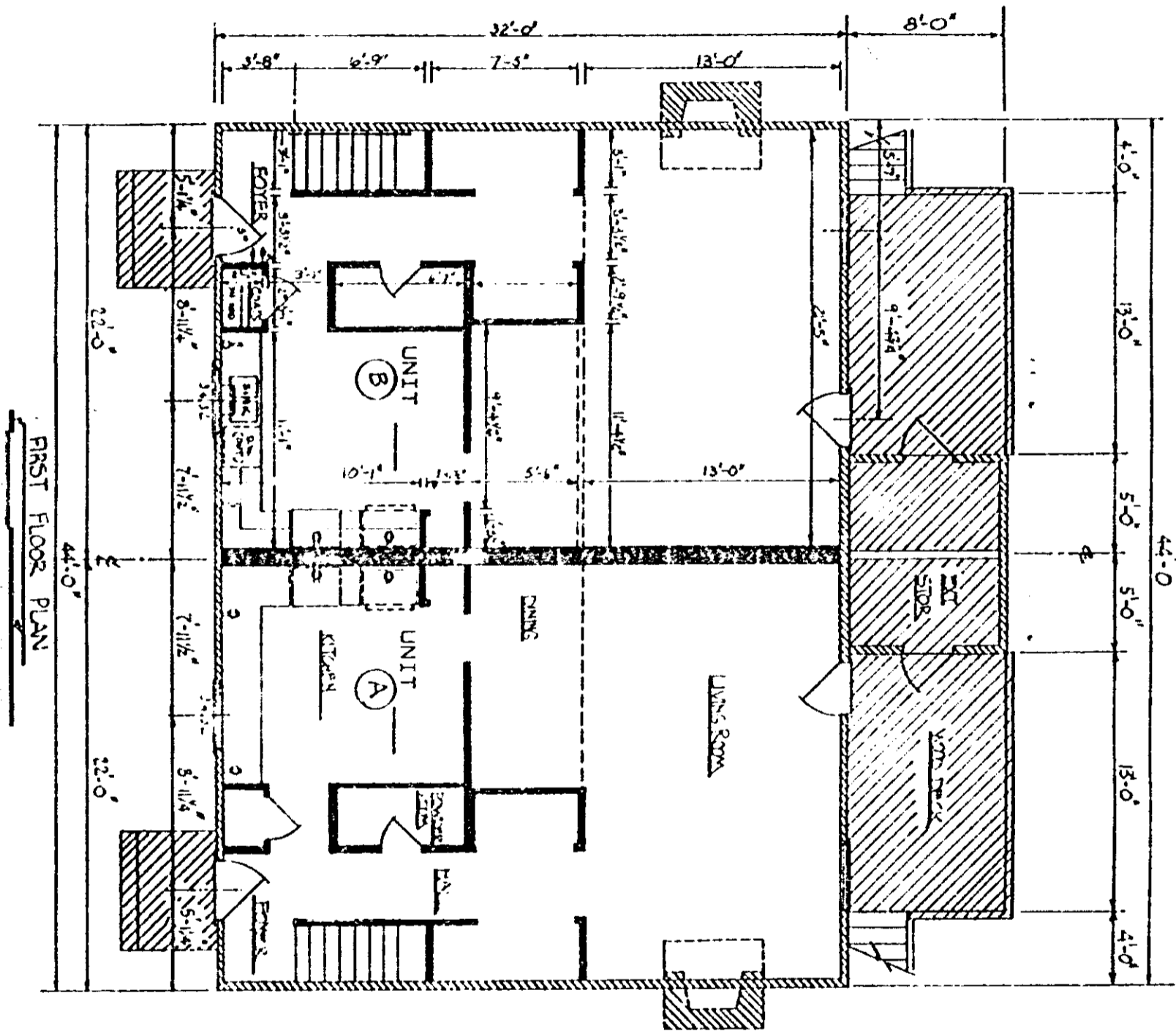




LIMITED COMMON ELEMENTS

VOL. 1094 PAGE 540

Exhibit A



CERTIFICATE

I, Wade H. Barber, do hereby certify that these plans fully depict within reasonable construction tolerances the layout, location letter identification, and dimensions of the buildings and dwellings contained therein.

*Wade H. Barber*



0549

4328 RV.2