

DUKE POWER COMPANY
(OSCAR M. ISRAEL)
0.55 ACRE
TO NO 7562-8

CAROLINA COURT
SECTION 2

DUKE POWER COMPANY
QUALITY CAR LEAC-OLDSMOBILE, INC
0.58 ACRE
TO NO 7562-9

TEMP. B. WARR. CO. ET AL.
REF. DWS NO. 52-8

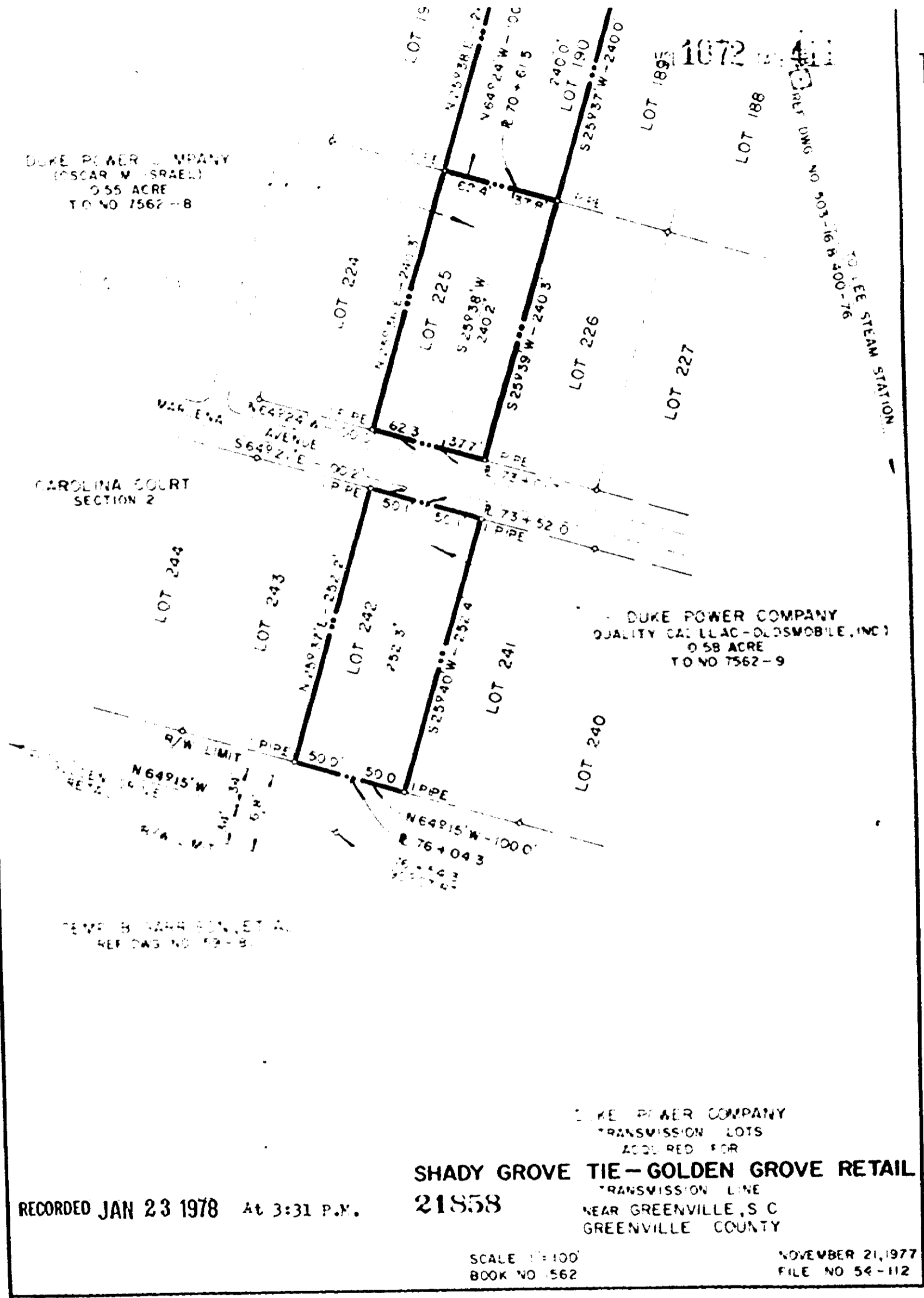
DUKE POWER COMPANY
TRANSMISSION LOTS
ACQUIRED FOR

SHADY GROVE TIE - GOLDEN GROVE RETAIL
21858
TRANSMISSION LINE
NEAR GREENVILLE, S C
GREENVILLE COUNTY

RECORDED JAN 23 1978 At 3:31 P.M.

SCALE 1"=100'
BOOK NO 1562

NOVEMBER 21, 1977
FILE NO 54-112



0 4 1 1 1

4328 RV-2