

1000 1000 1000

Name and Post Office Address of Applicant: Riverbend Apartments Limited Partnership
c/o U.S. Steffen Corporation, P.O. Box 4725
Greenville, S.C. 29606

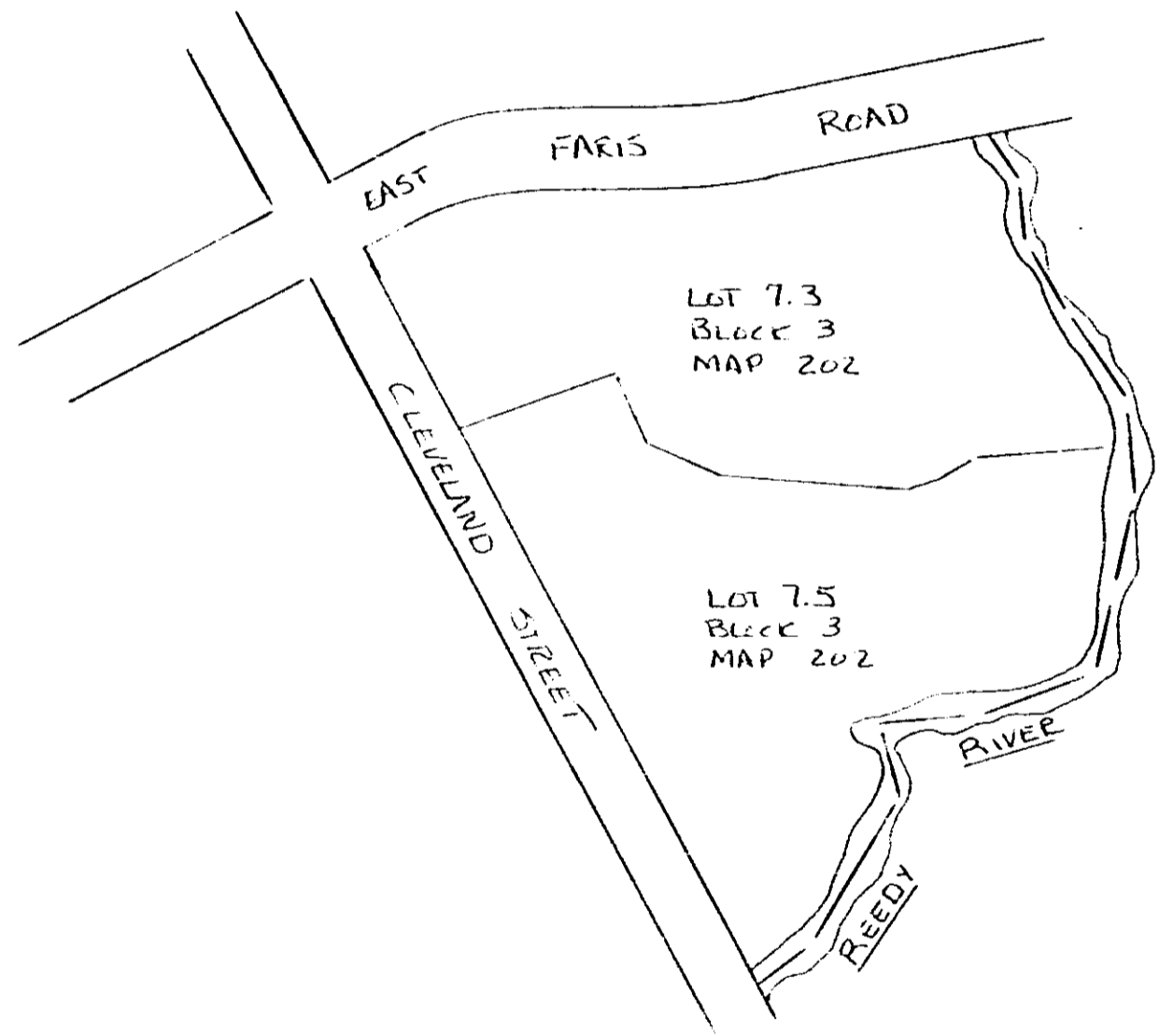
Toll Line or Exchange Line tributary to: RIVERBEND APARTMENTS DISTRIBUTION FACILITIES
GREENVILLE

The Property is bounded where the line enters and leaves this property by the property of:
EAST FARIS ROAD on the NORTH
CLEVELAND STREET on the WEST

Authority: EST 58724 Classification: 945C

Area: SOUTH CAROLINA

Approved: [Signature]
 Title: DISTRICT ENGINEER



Recorded August 25, 1977 at 4:00 P/M

6072

Filed for record in the office of
 the R. M. C. for Greenville
 County, S. C. at 1:00
 P. M. August 25 1977
 and recorded in Dead Book
 1063 at page 177

R. M. C. for G. Co. S. C.

See Reedy River
also on map

Riverbend Apartments

to

JK

AUG 25 1977

6072

8270

4328 RV-23