
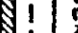



"EXHIBIT A"

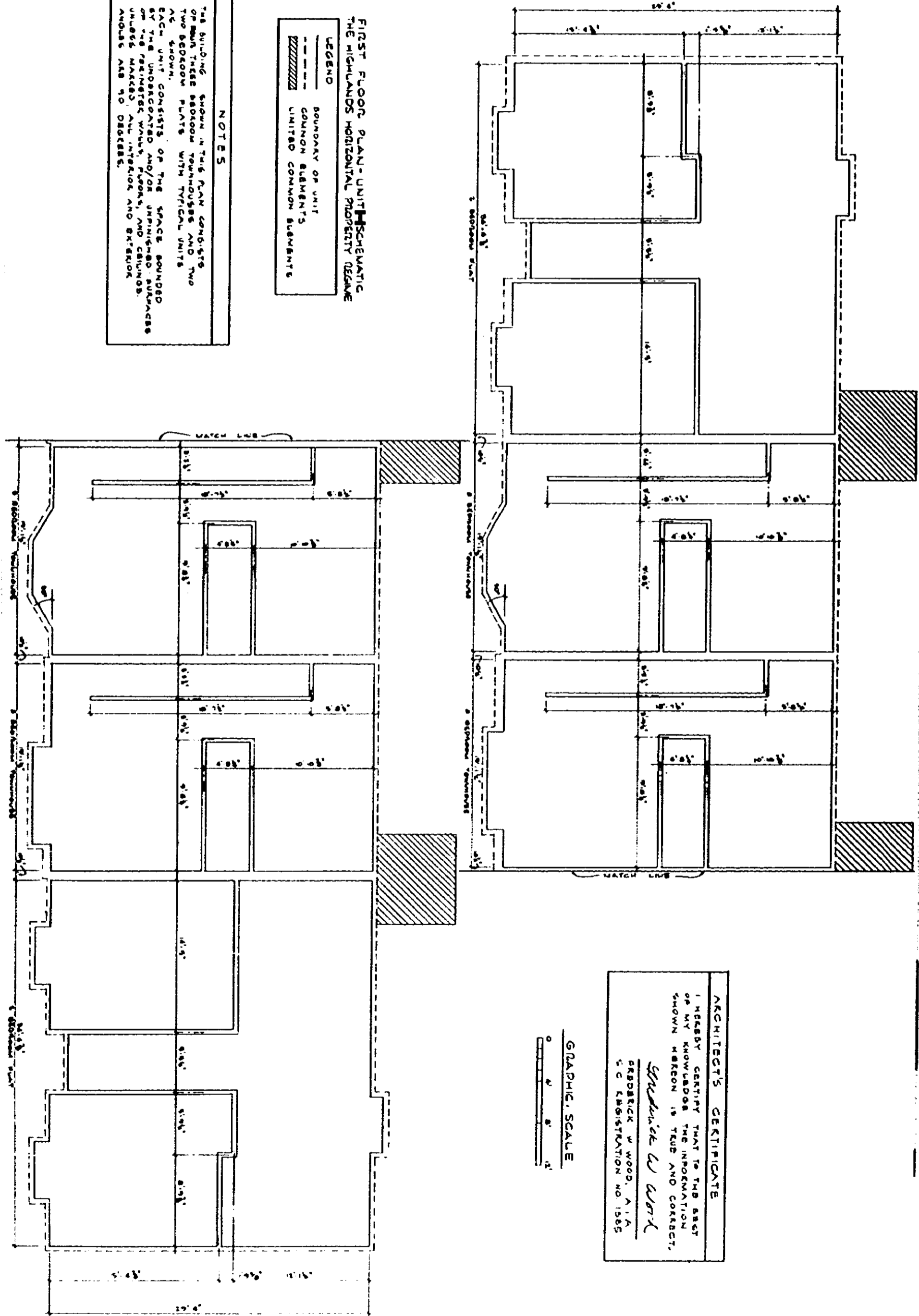
FIRST FLOOR PLAN-UNIT SCHEMATIC
THE HIGHLANDS HORIZONTAL PROPERTY REGIME

LEGEND

	BOUNDARY OF UNIT
	COMMON ELEMENTS
	LIMITED COMMON ELEMENTS

NOTES

1. THE BUILDING SHOWN IN THIS PLAN CONSISTS OF SEVEN TOWER APARTMENT HOUSES AND TWO TWO BEDROOM PLATS WITH TYPICAL UNITS AS SHOWN. EACH UNIT CONSISTS OF THE SPACE BOUNDED BY THE UNDERLINED AND/OR DASHED LINES AND UNITS MARKED ALL INTERIOR AND EXTERIOR ANGLES ARE 90 DEGREES.



ARCHITECT'S CERTIFICATE

I HEREBY CERTIFY THAT TO THE BEST OF MY KNOWLEDGE THE INFORMATION SHOWN HEREON IS TRUE AND CORRECT.

Frederick W. Wood

FREDERICK W. WOOD, A.I.A.
C.C. REGISTRATION NO. 1585

