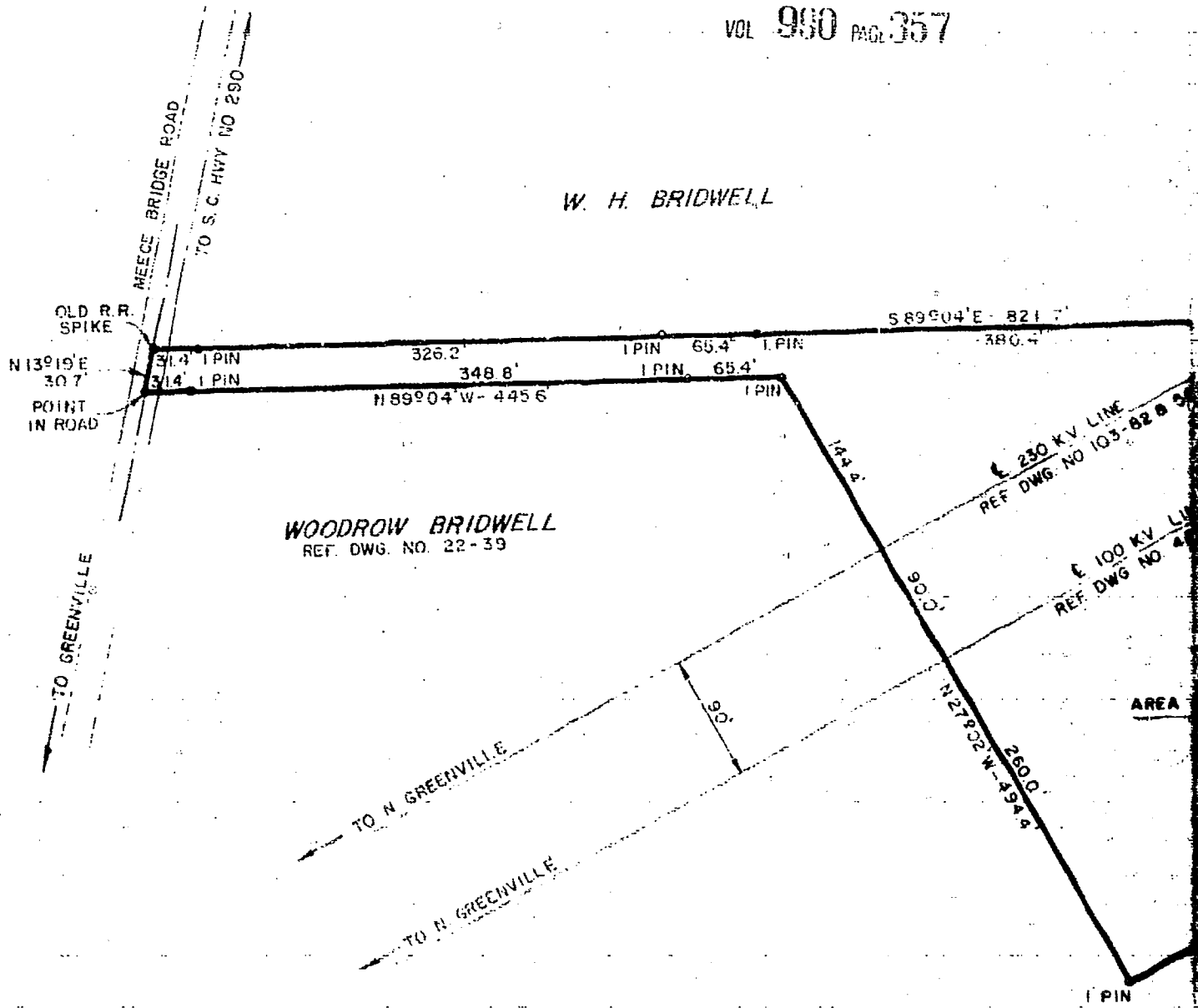


W. H. BRIDWELL



WOODROW BRIDWELL
REF. DWG. NO. 22-39

WOODROW BRIDWELL
REF. DWG. NO. 22-39

DUKE POWER COMPANY
ROBERTS ROAD RETAIL SUBSTATION LOT
ACQUIRED FROM
WOODROW BRIDWELL

NEAR: GREENVILLE, S. C.
CHICK SPRINGS TOWNSHIP
GREENVILLE COUNTY

NOTE FOR TOPOGRAPHIC MAP SEE
DWG NO 408-69

SCALE: 1" = 100
BOOK NO 900

NOV. 29, 1973
FILE NO. 151-175

(CONTINUED ON NEXT PAGE)

Deed a

0357

4328