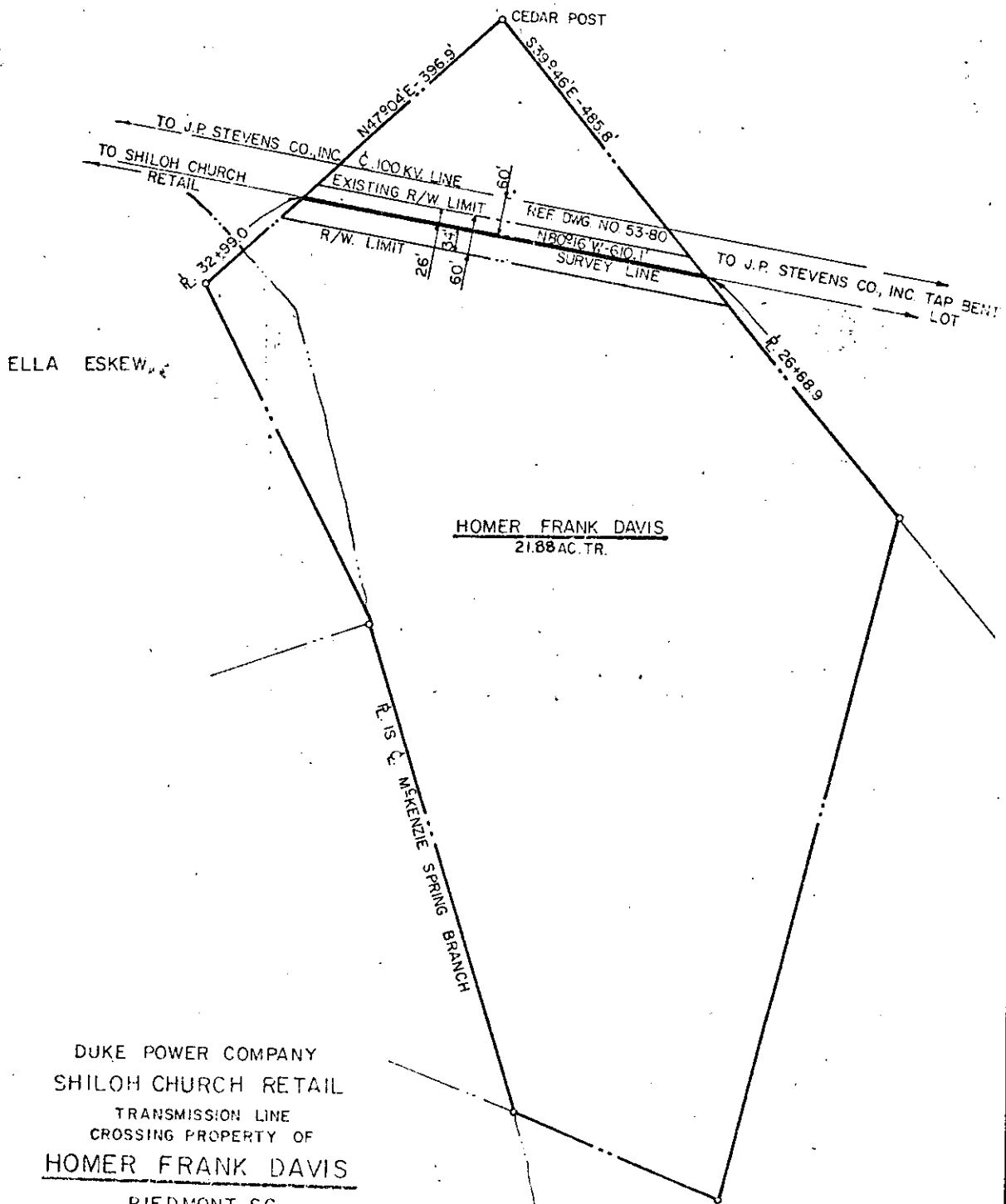




THE SOUTH CAROLINA NATIONAL BANK, ETAL.
REF. DWG. NO. 3-833



ELLA ESKEW, et

HOMER FRANK DAVIS
21.88 AC. TR.

DUKE POWER COMPANY
SHILOH CHURCH RETAIL
TRANSMISSION LINE
CROSSING PROPERTY OF
HOMER FRANK DAVIS
PIEDMONT, S.C.
GROVE, TOWNSHIP
GREENVILLE COUNTY

Plat Recorded April 27th, 1973 at
3:24 P. M. #30451

SCALE: 1"=200'
BOOK NO. 1230

FEB. 7, 1973
FILE NO. 3-835

T.O. NO. 7343-4