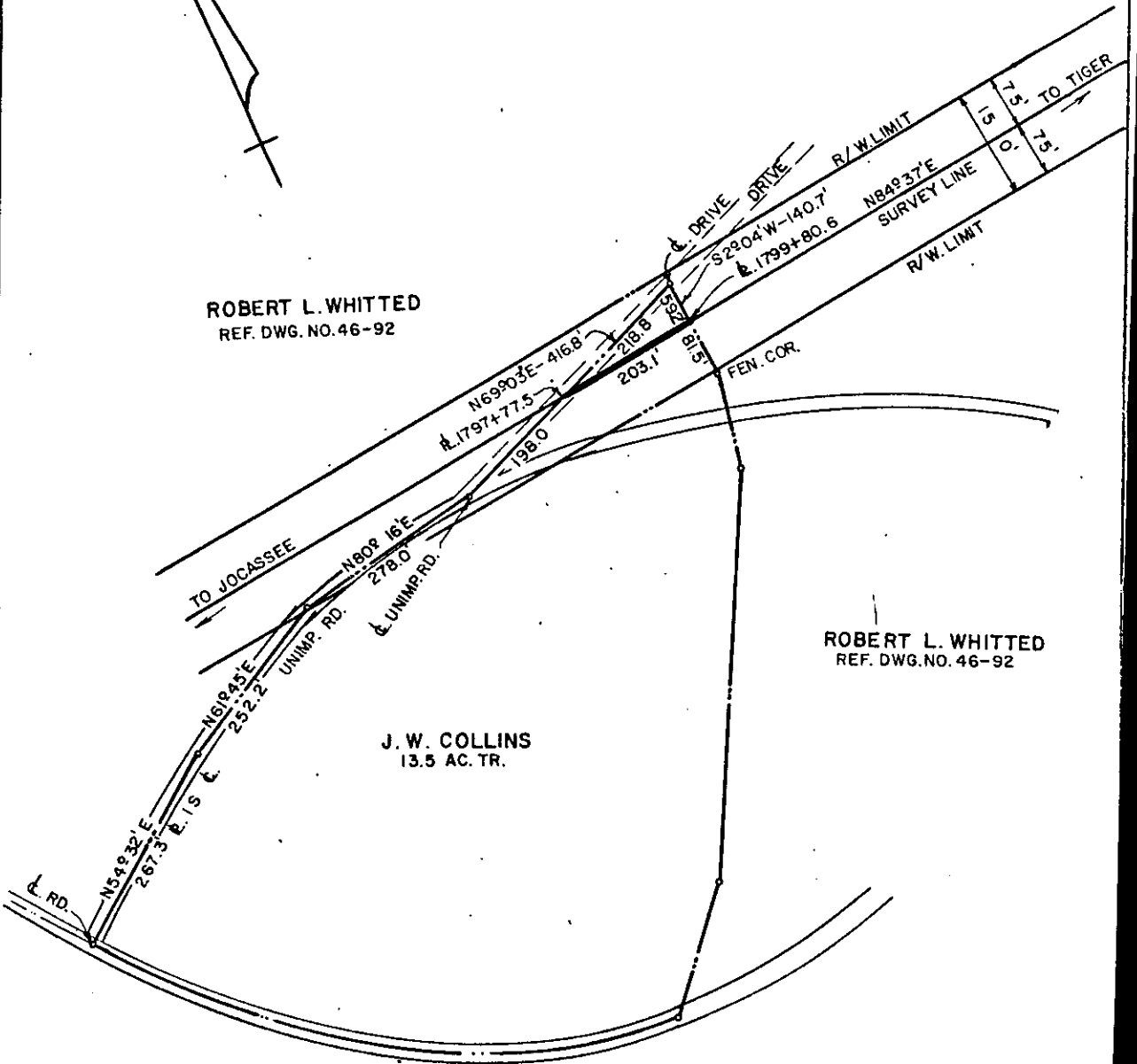


ROBERT L. WHITTED  
REF. DWG. NO. 46-92



ROBERT L. WHITTED  
REF. DWG. NO. 46-92

J. W. COLLINS  
13.5 AC. TR.

A. R. TABER

Plat Recorded March 17th, 1971 at 4:32 P.M.  
#21624

DUKE POWER COMPANY  
JOCASSEE-TIGER  
TRANSMISSION LINE  
CROSSING PROPERTY OF  
J. W. COLLINS  
NEAR MARIETTA, S.C.  
BATES TOWNSHIP  
GREENVILLE COUNTY

T.O. NO. 7123-56

SCALE 1"=200'  
BOOK NO. 1171

OCTOBER 15, 1960  
FILE NO. 46-162