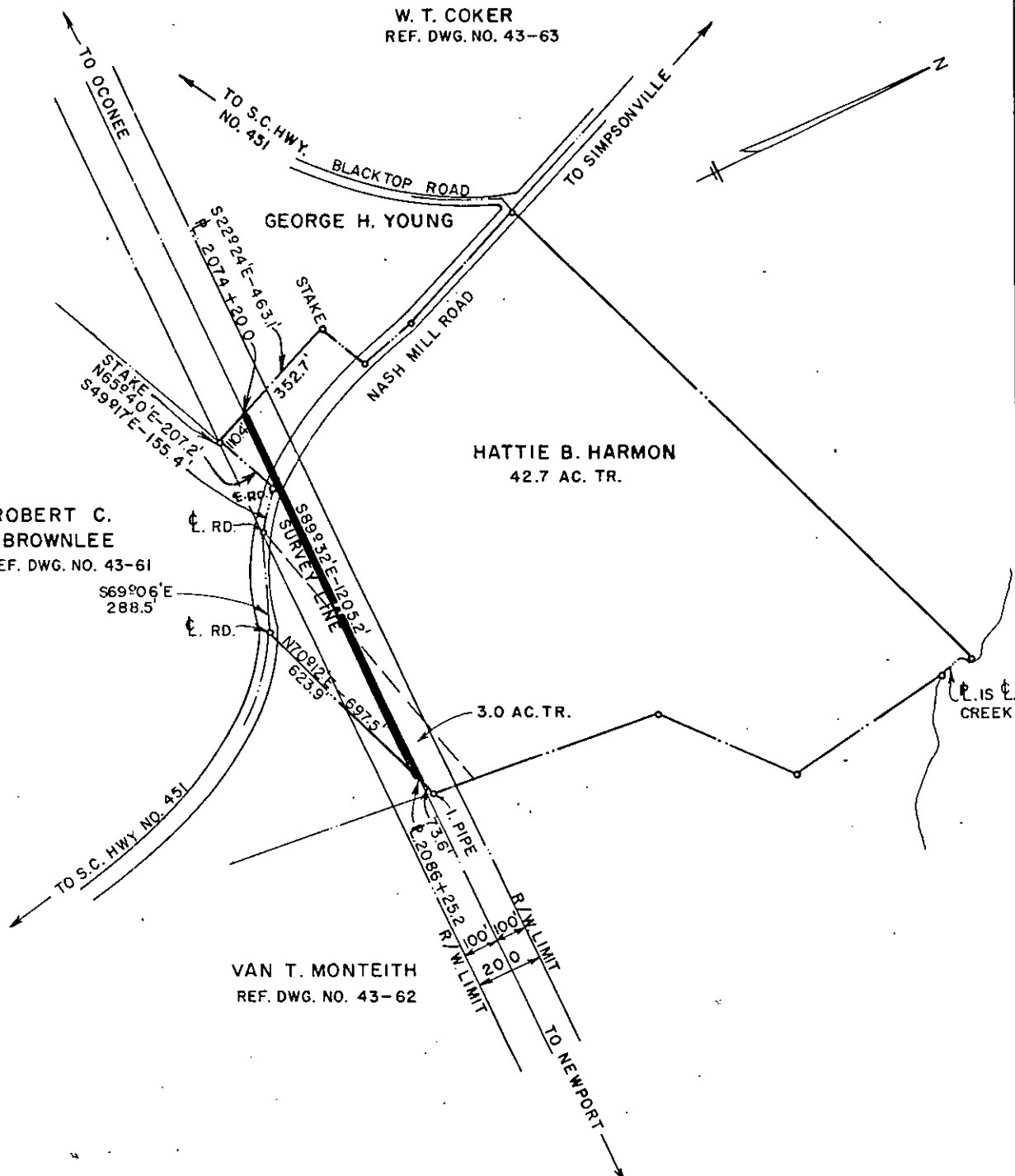


W. T. COKER  
REF. DWG. NO. 43-63



ROBERT C. BROWNLEE  
REF. DWG. NO. 43-61

HATTIE B. HARMON  
42.7 AC. TR.

VAN T. MONTEITH  
REF. DWG. NO. 43-62

DUKE POWER COMPANY  
OCONEE-NEWPORT  
TRANSMISSION LINE  
CROSSING PROPERTY OF  
HATTIE B. HARMON  
NEAR FOUNTAIN INN, S.C.  
FAIRVIEW TOWNSHIP  
GREENVILLE COUNTY

Recorded April 17, 1969 At 3:43 P.M.  
# 24850

SCALE: 1" = 400'      MARCH 20, 1969  
BOOK NO. 1081      FILE NO. 43-87

T.O. 7075-160