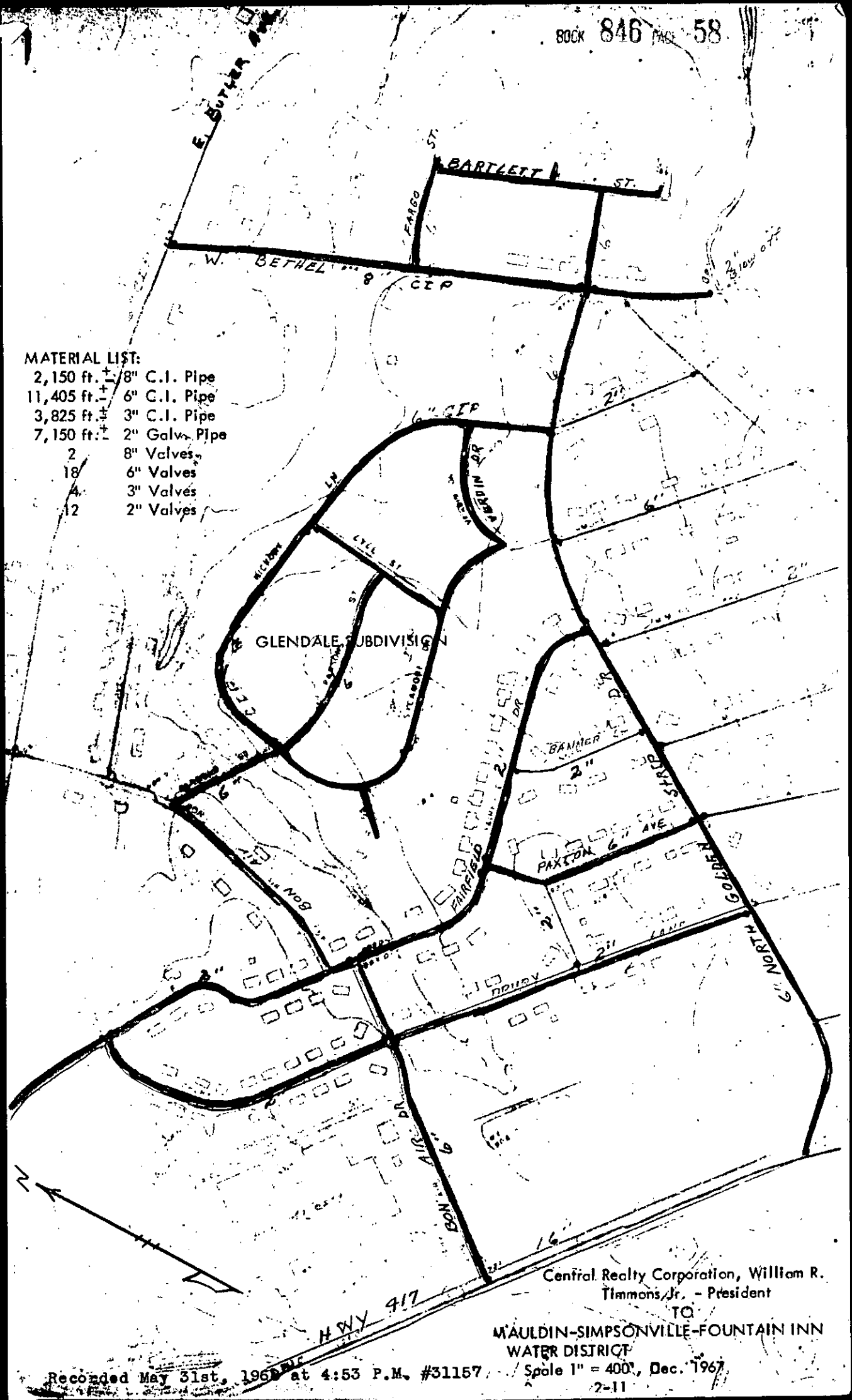


MATERIAL LIST:

- 2,150 ft. ± 8" C.I. Pipe
- 11,405 ft. ± 6" C.I. Pipe
- 3,825 ft. ± 3" C.I. Pipe
- 7,150 ft. ± 2" Galv. Pipe
- 2 8" Valves
- 18 6" Valves
- 4 3" Valves
- 12 2" Valves



Recorded May 31st, 1967 at 4:53 P.M. #31157

Central Realty Corporation, William R. Timmons, Jr. - President
 MAULDIN-SIMPSONVILLE-FOUNTAIN INN WATER DISTRICT
 Scale 1" = 400', Dec. 1967
 2-11