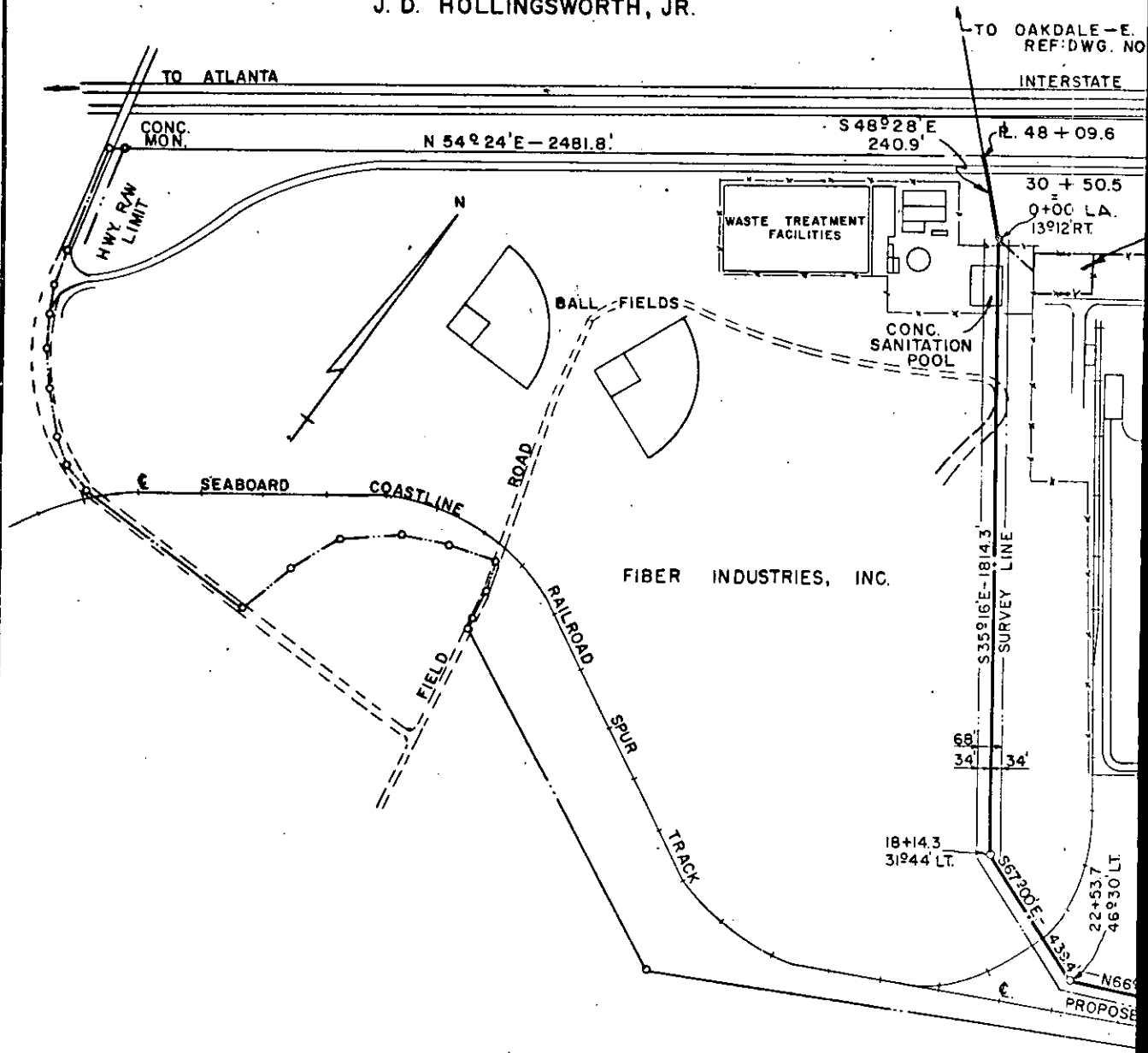


J. D. HOLLINGSWORTH, JR.



DUKE POWER COMPANY
 GENERAL ELECTRIC GAS TURBINE PLANT
 TRANSMISSION LINE
 CROSSING PROPERTY OF
 FIBER INDUSTRIES INC.
 GREENVILLE, S. C.
 GREENVILLE COUNTY

SCALE: 1"=400'
 BOOK NO 989

FEBRUARY 26, 1968
 FILE NO. 154-174-A

L.B.M. (Continued on next page)