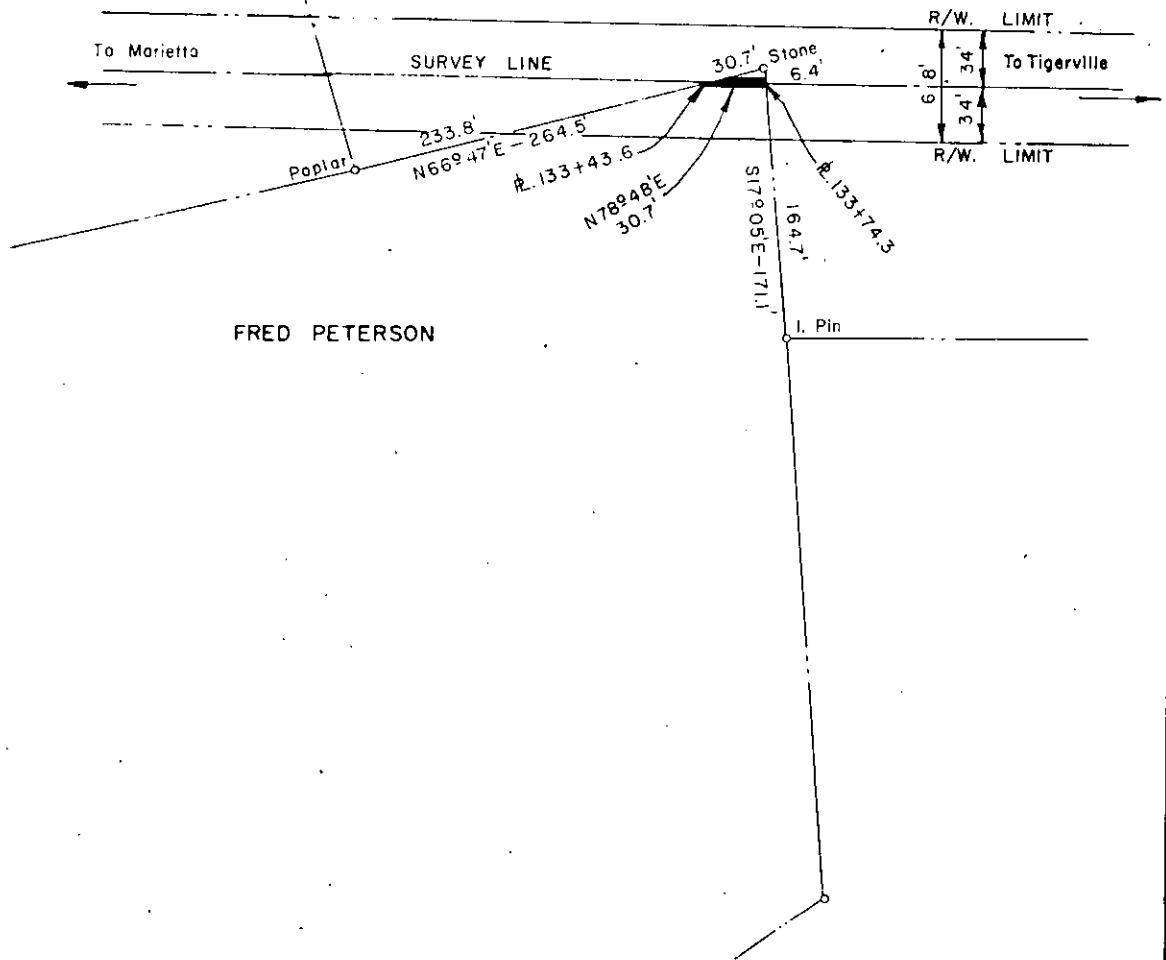


ROY BURRY  
REF. DWG. NO. 35-22

ETTA STAMEY  
&  
FANNIE SENTELL  
REF. DWG. NO. 35-07



DUKE POWER COMPANY,  
MARIETTA-TIGERVILLE  
TRANSMISSION LINE  
CROSSING PROPERTY OF  
FRED PETERSON  
NEAR MARIETTA, S. C.  
BATES TOWNSHIP  
GREENVILLE COUNTY

SCALE: 1" = 100'  
BOOK NO. 921

JANUARY 26, 1967  
FILE NO. 35-12

Recorded February 24th., 1967 At 12:47 P.M. # 20550