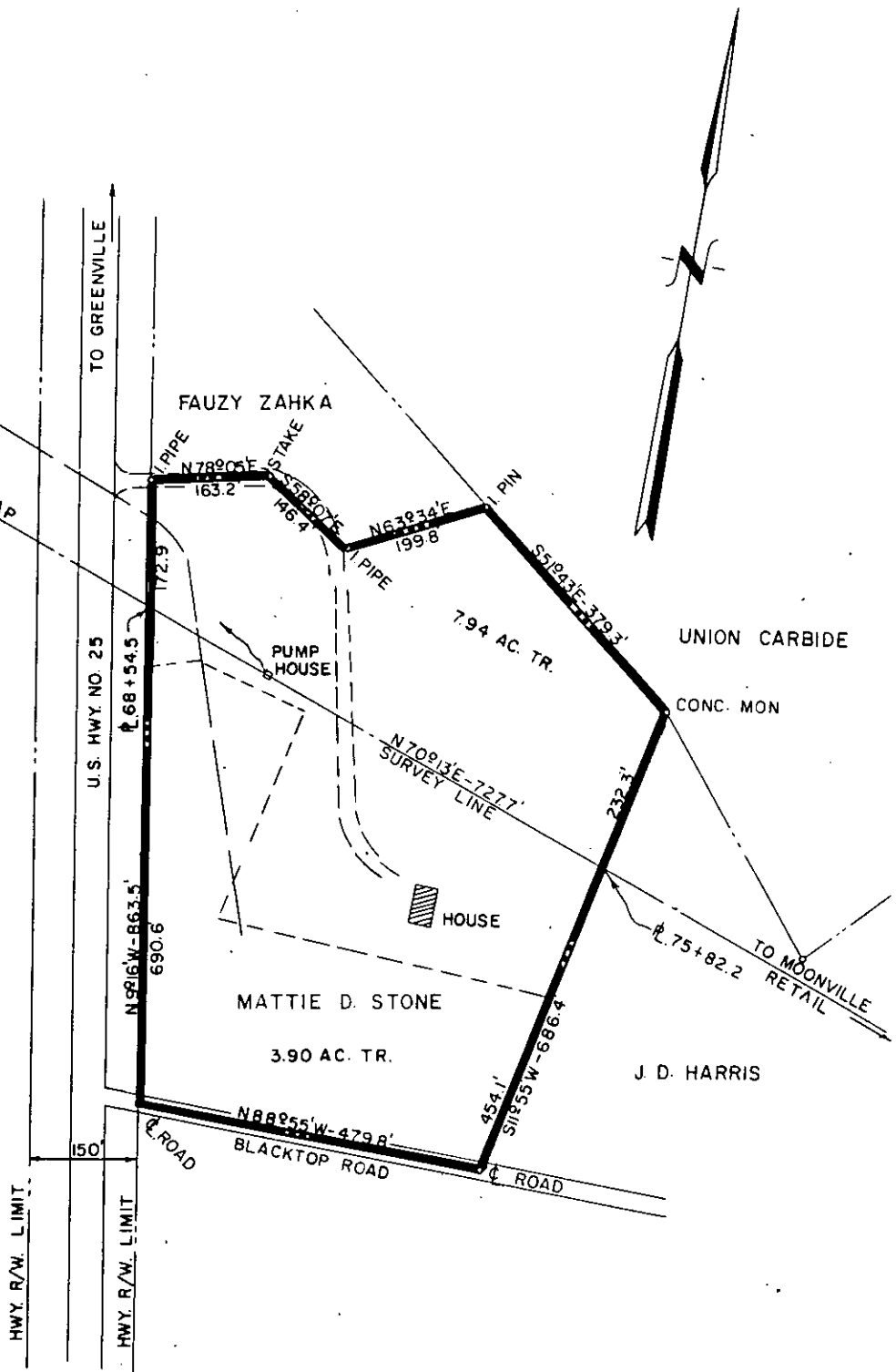


PEOPLES NATIONAL BANK OF GREENVILLE, TRUSTEE  
 REF. DWG. NO. 53-173



DUKE POWER COMPANY  
 MOONVILLE TAP - MOONVILLE RETAIL  
 TRANSMISSION LOT  
 ACQUIRED FROM  
 MATTIE D. STONE  
 NEAR GREENVILLE, S. C.  
 GROVE TOWNSHIP  
 GREENVILLE COUNTY

Recorded November 30th., 1966

SCALE: 1" = 200  
 BOOK NO 899

OCT. 15, 1966  
 FILE NO. 34-15

At 10:06 A.M. # 13647