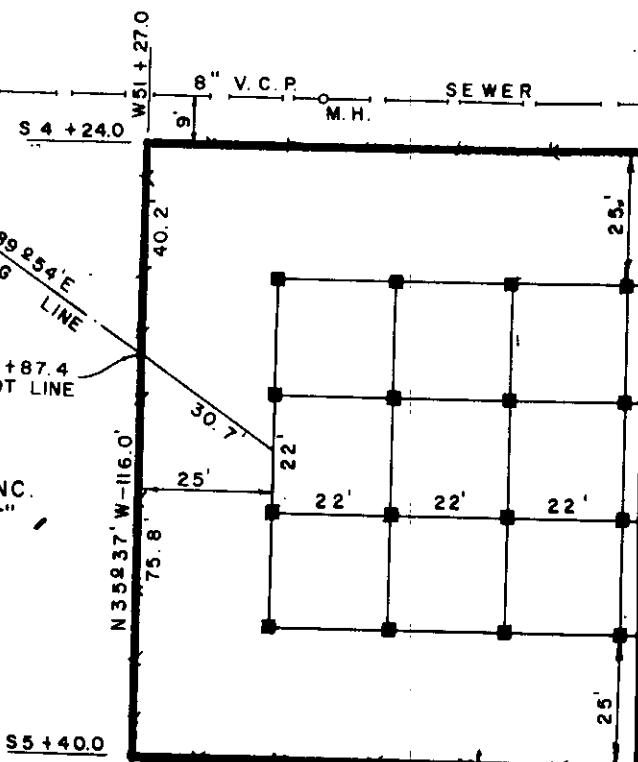


NYLON INDUSTRIES, INC.
"GREENVILLE PLANT"

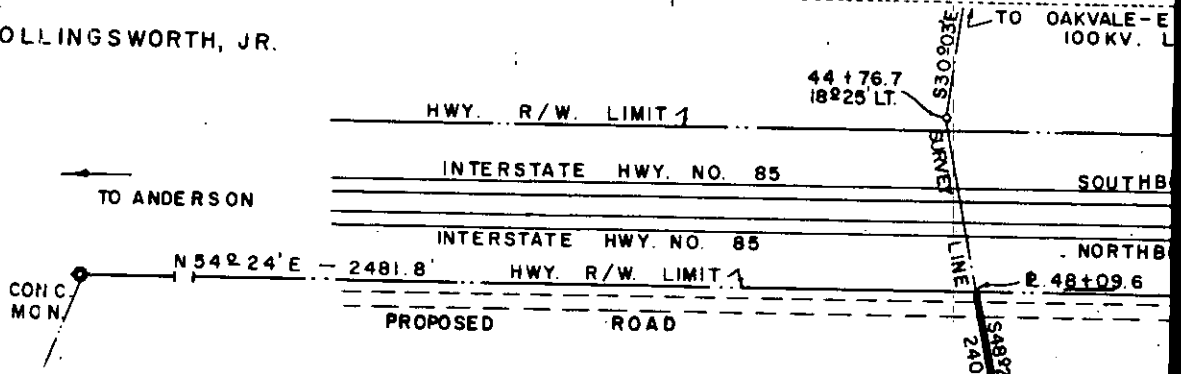
N 89° 54' E
INCOMING LINE

51+87.4
LOT LINE



DETAILS OF SUBS
SCALE: 1" = 30'

J. D. HOLLINGSWORTH, JR.



NYLON INDUSTRIES, INC.
"GREENVILLE PLANT"

N 89° 54' E
M.H.

LOT LINE
51+87.4

DETAILS OF SUBSTATION
SEE ABOVE



DUKE POWER COMPANY
SUBSTATION LOT
AND
TRANSMISSION LINE
TO SERVE
NYLON INDUSTRIES, INC.
"GREENVILLE PLANT"
GREENVILLE, S.C.
GREENVILLE COUNTY

SCALE: 1" = 300'
BOOK NO. 700

MARCH 17, 1964
FILE NO. 154-174

Recorded April 23, 1964 At 9:30 A.M. # 30092