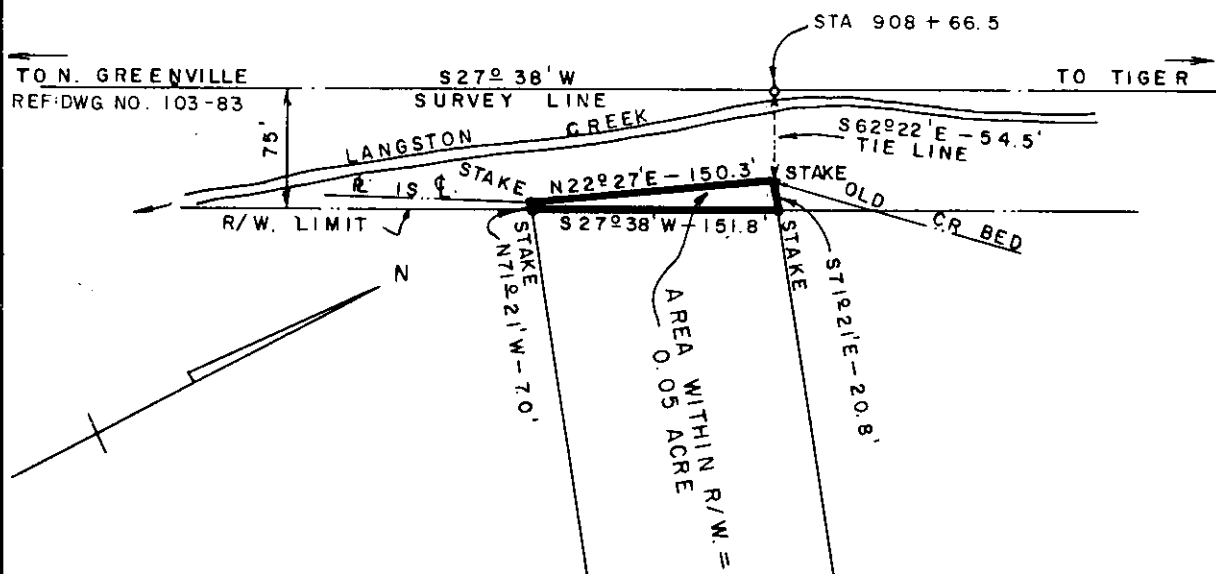


ALPHA B. CHILDRESS
REF: DWG. NO. 23-115



LUKE L. CAUDELL
TRACT NO. 29
REF: DWG. NO. 24-46

MARTIN J. CAUDELL
TRACT NO. 30

R. L. BINGHAM
TRACT NO. 31
REF: DWG. NO. 24-44

Recorded January 21, 1964 At 3:39 P.M. # 20487

DUKE POWER COMPANY
TIGER - NORTH GREENVILLE
TRANSMISSION LINE
CROSSING PROPERTY OF
MARTIN J. CAUDELL
PARIS MOUNTAIN TOWNSHIP
GREENVILLE COUNTY, S.C.

SCALE: 1" = 100'

SEPTEMBER 13, 1963
FILE NO. 24-45

WOODLAWN DRIVE