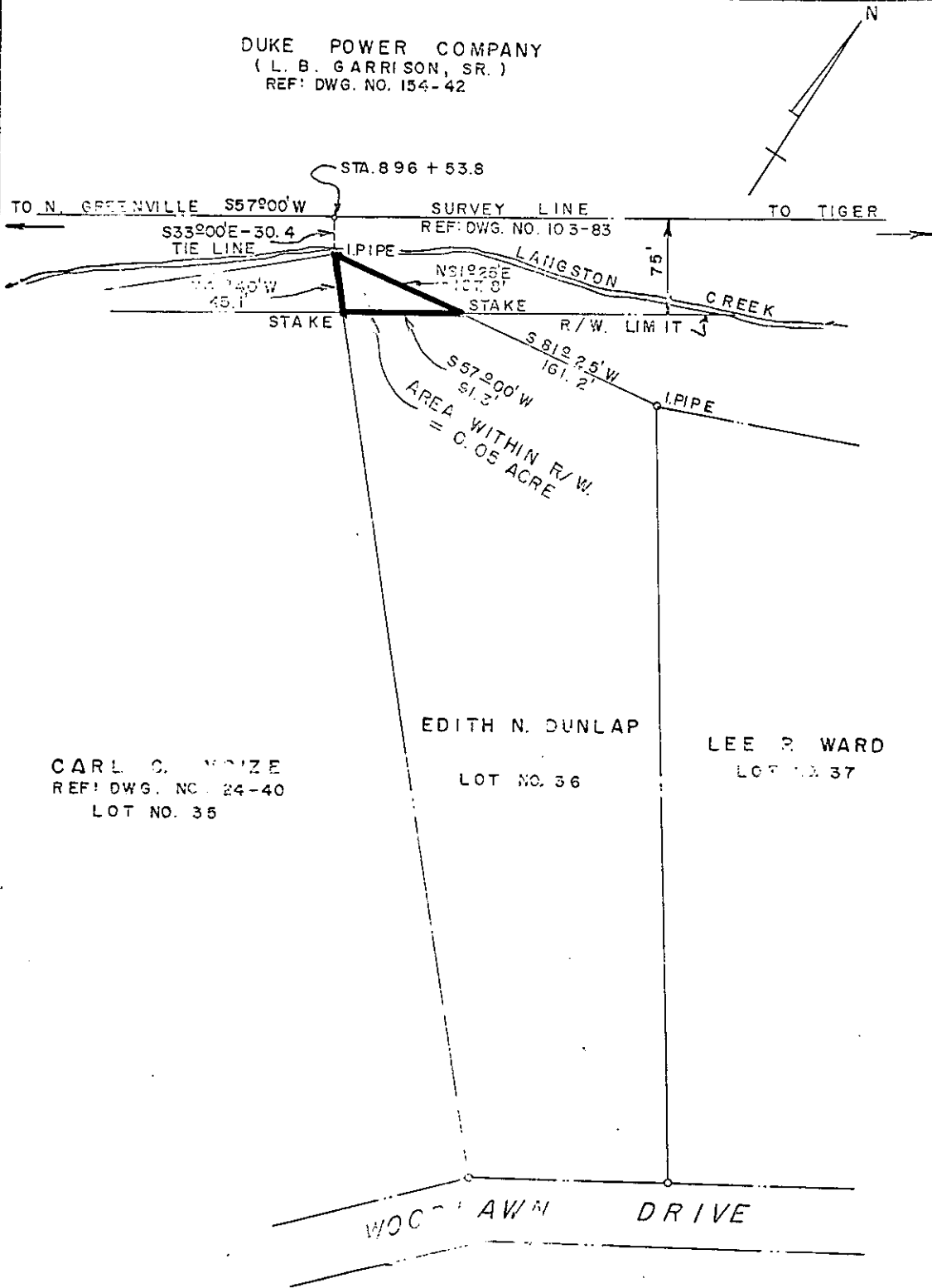


DUKE POWER COMPANY
(L. B. GARRISON, SR.)
REF: DWG. NO. 154-42



CARL C. MOIZE
REF: DWG. NO. 24-40
LOT NO. 35

EDITH N. DUNLAP
LOT NO. 36

LEE P. WARD
LOT NO. 37

DUKE POWER COMPANY
TIGER - NORTH GREENVILLE
TRANSMISSION LINE
CROSSING PROPERTY OF
EDITH N. DUNLAP
PARIS MOUNTAIN TOWNSHIP,
GREENVILLE COUNTY, S.C.

Recorded November 22, 1963 At 12:40 P.M.
15255

SCALE 1"=100'
BOOK NO. 627

SEPTEMBER 11, 1963
FILE NO. 24-39