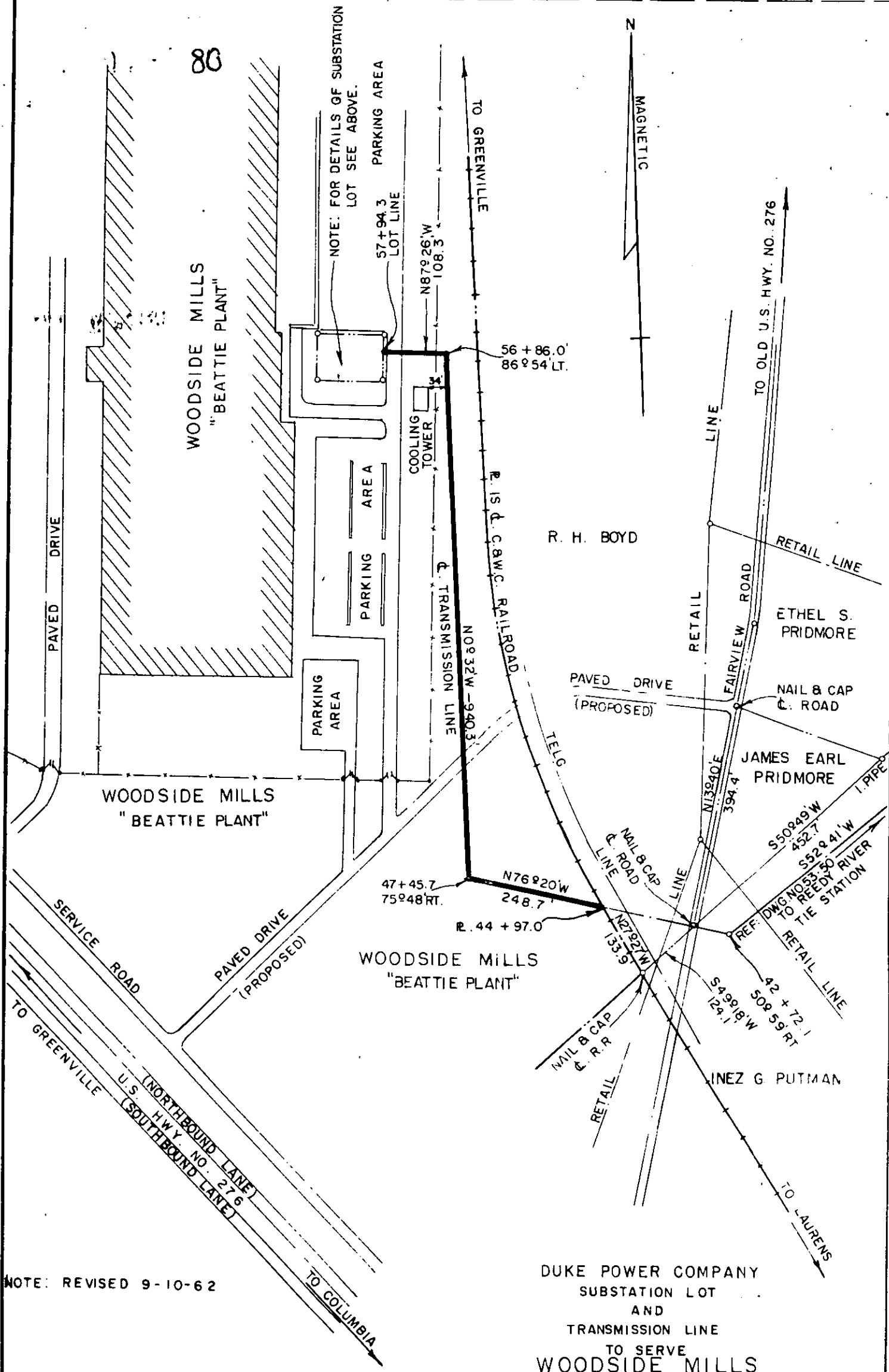


80



NOTE: FOR DETAILS OF SUBSTATION LOT SEE ABOVE.

MAGNETIC

NOTE: REVISED 9-10-62

DUKE POWER COMPANY
 SUBSTATION LOT
 AND
 TRANSMISSION LINE
 TO SERVE
 WOODSIDE MILLS
 "BEATTIE PLANT"
 FOUNTAIN INN, S.C.
 FAIRVIEW TOWNSHIP
 GREENVILLE COUNTY

Plat Recorded October 2nd., 1962 at 9:45 A.M. No. 8781

For Deed to this plat, see page 76 in this book

SCALE: 1" = 200' BOOK NO. 668

AUGUST 27, 1962 FILE NO. 53-49