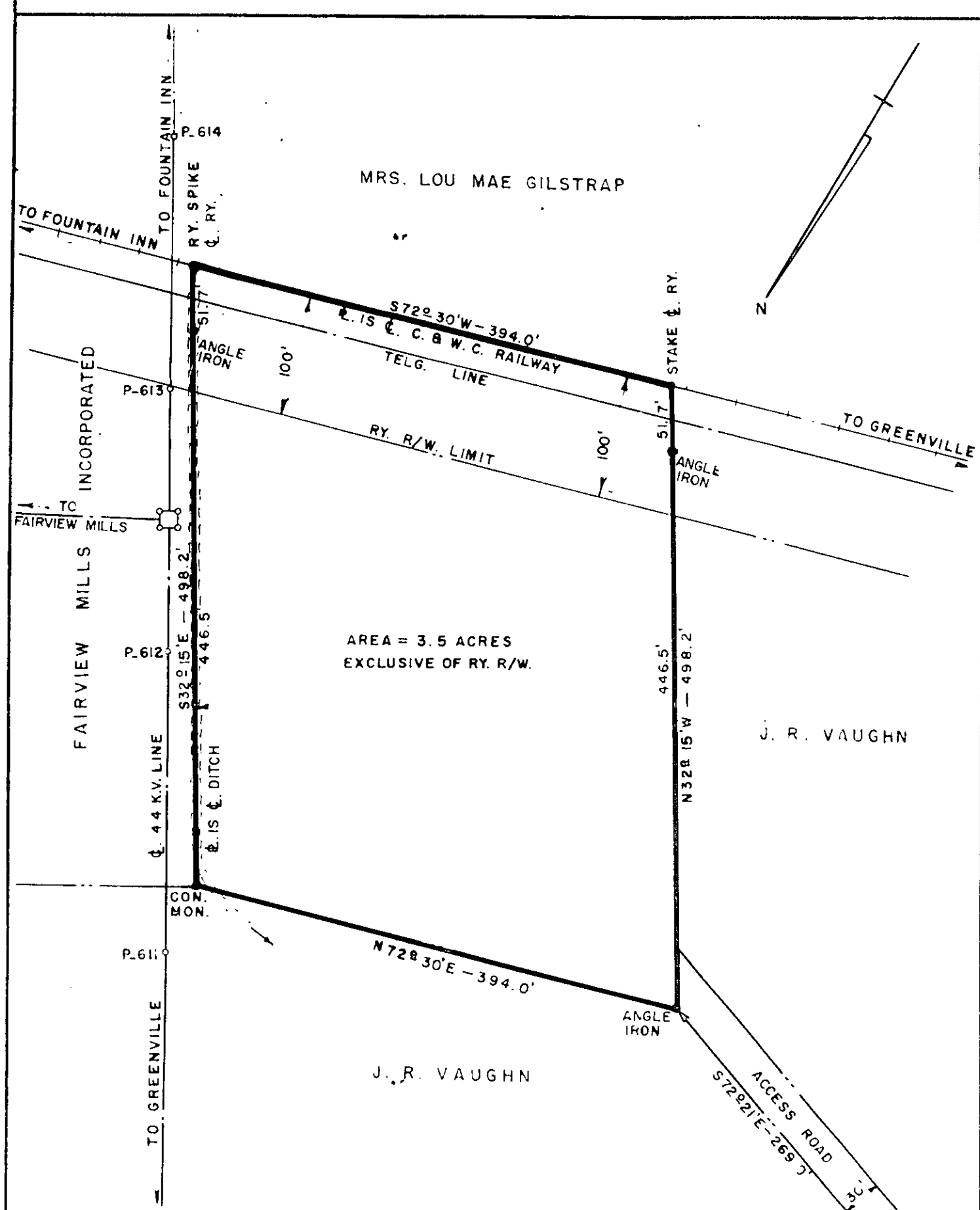


MRS. LOU MAE GILSTRAP

N



AREA = 3.5 ACRES
EXCLUSIVE OF RY. R/W.

J. R. VAUGHN

J. R. VAUGHN

NOTE:
MAP REVISED 6-21-56

DUKE POWER COMPANY
SUBSTATION LOT
ACQUIRED FROM
J. R. VAUGHN
GREENVILLE COUNTY
FOUNTAIN INN, S.C

SCALE: 1"=100'
BOOK NO. 447
MAY 28, 1956
FILE NO. 15-148

SANDCLAY RCAC
REF.
DWG NO. 102-67

Recorded July 6th, 1956 at 9:15 A.M. #17242