

FILED

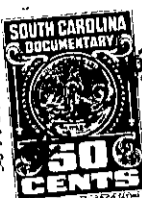
VOL 425 PAGE 404

The State of South Carolina,

County of GREENVILLE.

DEC 22 4 1950

OLLIE FARNSWORTH
R.M.C.



KNOW ALL MEN BY THESE PRESENTS, That Chapin Spring Land Company
(R. E. Houston, Trustee),

in the State aforesaid, in consideration of the sum of Three Thousand Three Hundred (\$3,300.00)
Dollars,

to the grantor in hand paid at and before the sealing of these presents by
R. E. Houston, Jr., and I. Hayne Houston,

(the receipt whereof is hereby acknowledged), have granted, bargained, sold and released, and by these presents do grant, bargain, sell and release unto the said grantees:

All that piece, parcel or lot of land in Greenville Township, Greenville County, State of South Carolina, known and designated as Lots #11 and #12, Block E, and Lots #20, #21, # 2, # 3, # 4, #5, #6, #7 and #18, Block F, as shown on a plat thereof, entitled "Property of Chapin Spring Land Co, Greenville, South Carolina", prepared by R. E. Dalton, Engineer, dated April, 1917, which plat is recorded in the R. M. C. Office for Greenville County, South Carolina in Plat Book E, page 41, and having, according to said plat, the following metes and bounds, to-wit:

Lots #11 and #12, Block E: Beginning at a point on Houston Street 60.2 feet from the southwest intersection of Houston Street and Pearl Avenue, which point is the joint corner of Lots #10 and #11 of said Block E, and running thence along the west side of Houston Street, S. 2-58 W. 138.2 feet to a stake, joint corner of Lots #12 and #13 of said Block E; thence along the joint line of said Lots #12 and #13, S. 88-0 W. 125.2 feet to a stake, joint corner of said Lots #12 and #13; thence along the joint line of Lots #12 and #14 of said Block E, N. 2-0 W. 60.9 feet to a stake, joint corner of said Lots #12 and #14; thence along the joint line of Lots #9 and #12 of said Block E, N. 86-17 E. 29 feet to a stake, joint corner of Lots #9 and #11 of Block E; thence along the joint line of said Lots #9 and #11, N. 2-30 W. 77.5 feet to a stake, joint corner of Lots #10 and #11 of said Block E; thence along the joint line of said Lots #10 and #11, N. 88-44 E. 108.4 feet to the point of beginning.

Lots #20, #21, #2, #3, #4, #5, #6, #7 and #18, Block F: Beginning at a point on Houston Street 50.1 feet from the northeast intersection of Houston Street and Rose Avenue, which point is the joint corner of Lots #19 and #20 of said Block F, and running thence along the east side of Houston Street N. 2-58 E. 155.3 feet to a stake, joint corner of Lots #1 and #2 of said Block F; thence along the joint line of said Lots #1 and #2, N. 88-0 E. 163.4 feet to a stake, joint corner of said Lots #1 and #2; thence along the joint line of Lots #1 and #3 of said Block F, N. 2-0 W. 63 feet to a stake on Pearl Avenue, joint corner of said Lots #1 and #3; thence along the south side of Pearl Avenue N. 80-39 E. 252 feet to a stake, joint corner of Lots #7 and #8 of said Block F; thence along the joint line of said Lots #7 and #8, S. 2-0 E. 150 feet to a stake, joint corner of said Lots #7 and #8; thence along the joint line of Lots #3 through #7 and Lots #13 through #17 of said Block F, S. 88-0 W. 250 feet to a stake, joint corner of lots # 17 and #18 of said Block F; thence running along the joint line of said lots #17 and #18 S. 2-0 E. 150 feet to a stake on Rose Avenue, joint corner of said lots #17 and #18; thence along the North side of Rose Avenue S. 88-0 W. 50 feet to a stake on Rose Avenue, joint corner of lots #18 and #19 of said block F; thence along the joint line of lots #18 and #19, N. 2-0 W. 50 feet to a stake, joint corner of lots #19 and #20 of said Block F; thence running along the joint line of said lots #19 and #20, S. 88-0 W. 126 feet to the point of beginning.