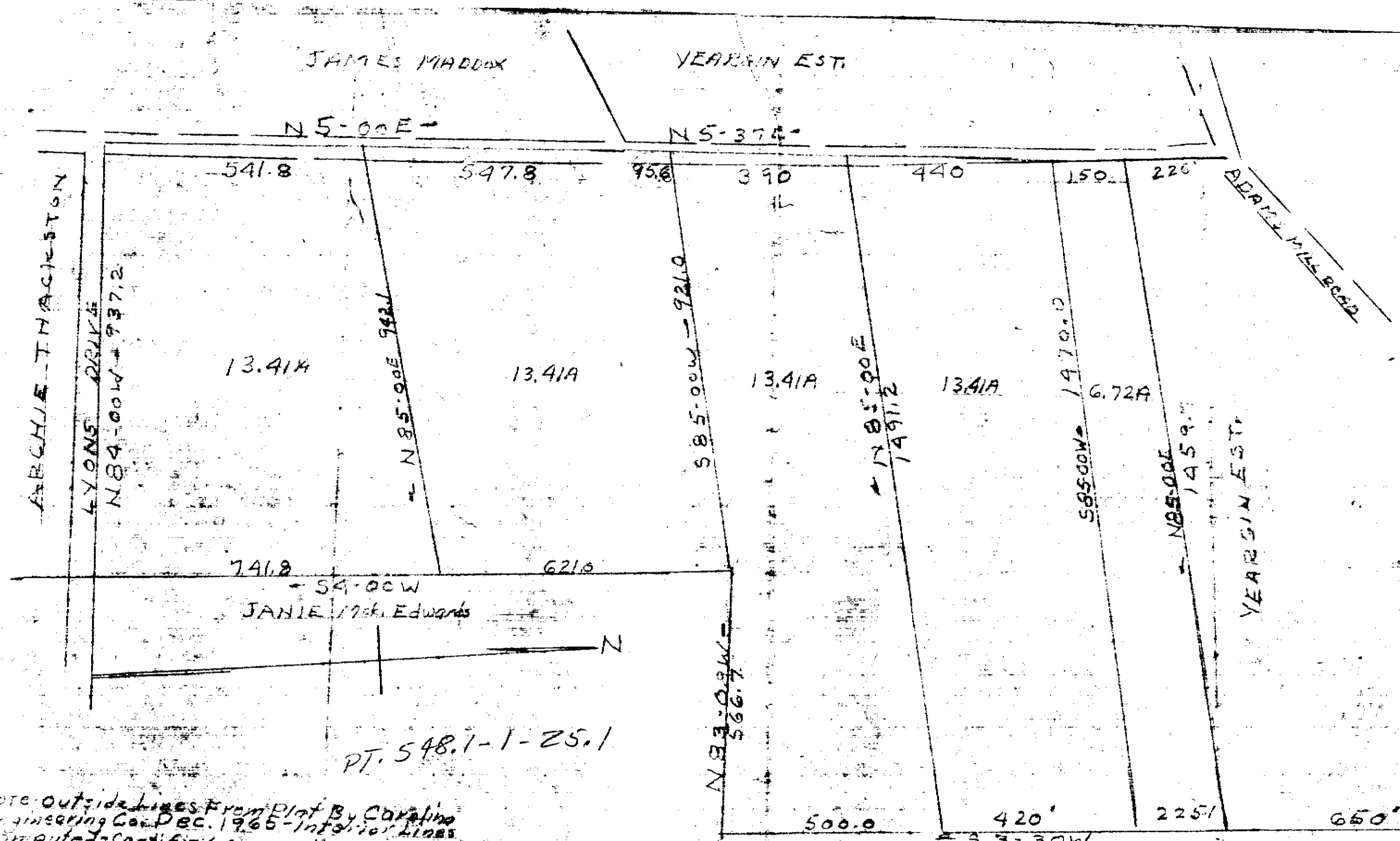


9152 Filed This 16 day of Oct 1970
 And Recorded in Vol. 44-49 at 2:23 P
 Ollie Farnsworth
 Register Mesne Conveyance Greenville County, S. C.

GREENVILLE CO. S. C.
 Oct 16 2 23 PM '70
 OLLIE FARNSWORTH
 R.M.C.



Note: outside lines from Plat by Carolina Engineering Co. Dec. 1965 - Interior lines Computed - Certified Correct.

J. Mac Richardson

THIS PLAT IS NOT A SUBDIVISION AS DEFINED BY THE GREENVILLE COUNTY SUBDIVISION REGULATIONS.
 10/12/1970
 J. Calum Shaw
 Chairman, Secretary, or Director of Planning.
 Greenville County Planning Commission

GEORGE B. YEARGIN ESTATE
 GREENVILLE COUNTY, S.C.
 SCALE 1" = 200'
 J. Mac Richardson, R.L.S. #598
 JULY 1970

44-49

Entered
 10/16/70
 M

OCT 16 1970
 915