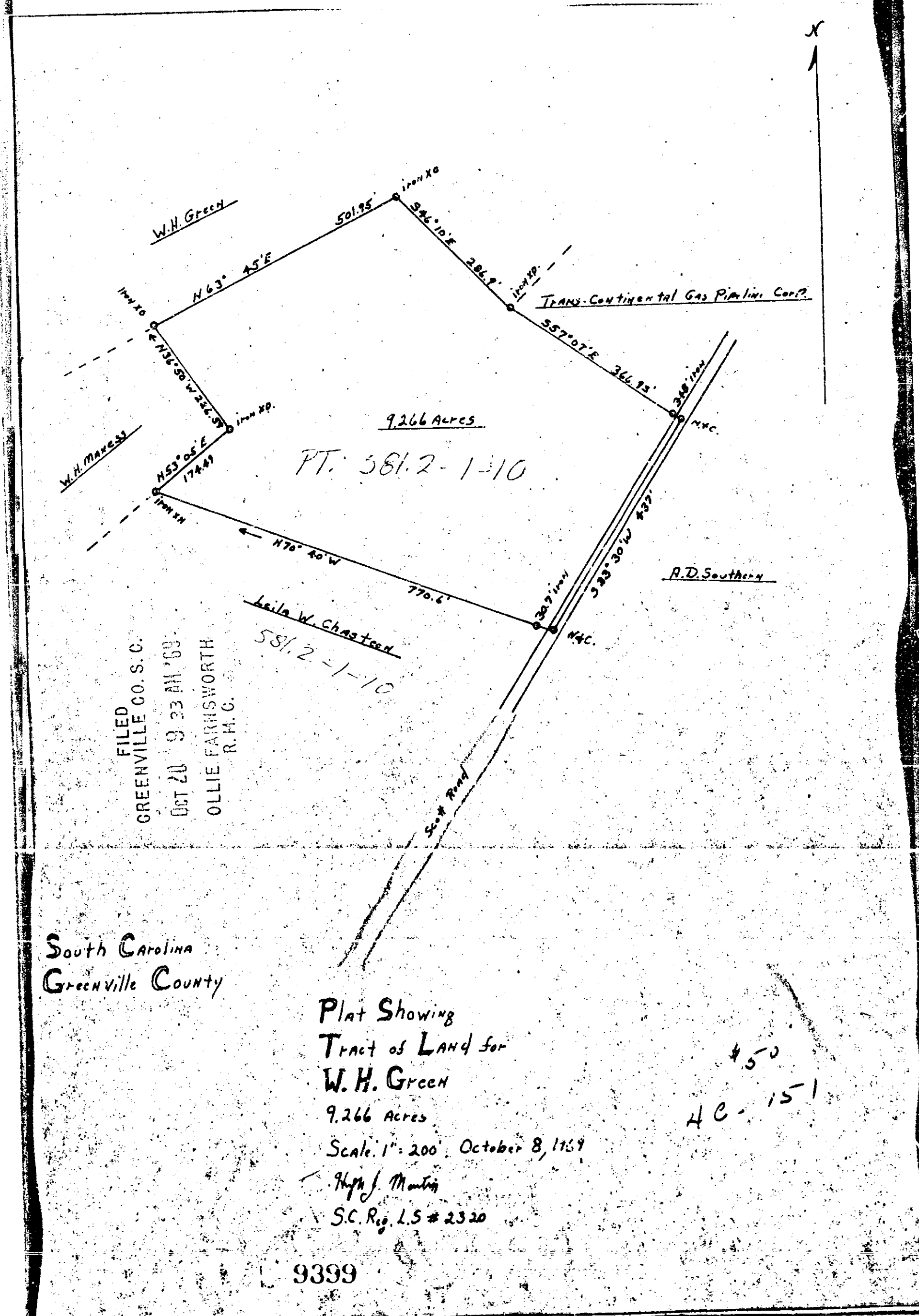


Ollie Farnsworth  
Register Mesne Conveyance Greenville County, S. C.



FILED  
GREENVILLE CO. S. C.  
OCT 20 9 23 AM '47  
OLLIE FARNSWORTH  
R. H. C.

South Carolina  
Greenville County

Plat Showing  
Tract of Land for  
W. H. Green  
9.266 Acres  
Scale: 1" = 200' October 8, 1947  
Hugh J. Montoy  
S.C. Reg. L.S. # 2320

450  
40-151

9399

