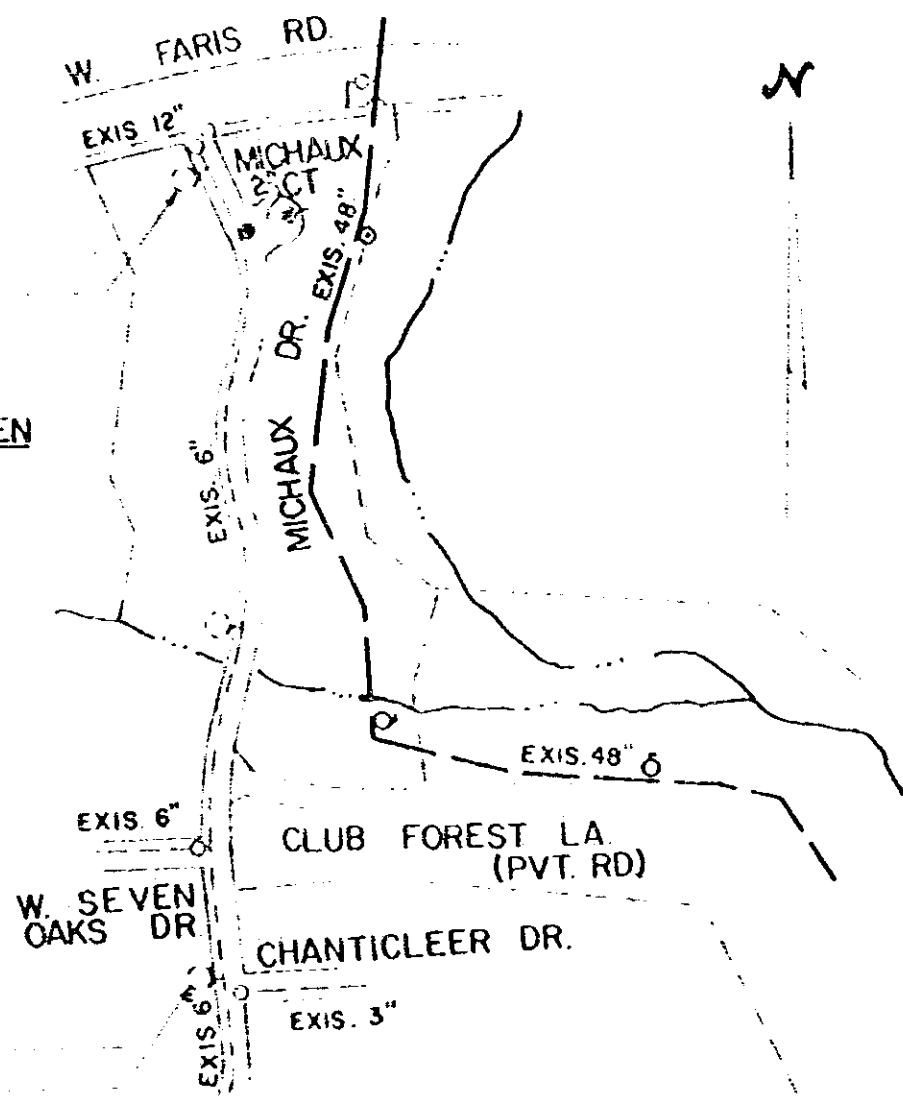


STA: = 98 P.S. I.
RES: = 87 P.S. I

NOTE: 2" VALS. OPEN
LEFT.



STA: = 96 PS. I
FLOW = 1840 G.P.M.

MATERIAL LIST:

2" Galv. Pipe	-	135'±
2" Valves	-	2
Valve Boxes	-	2

College Properties, Inc.
to
Commissioners of Public Works
of the City of Greenville, S. C.
November 17, 1982

MICHALUX CT.
(CLUB FOREST)
AUG 1982 1" = 40'

BLK. Book Pt. of 101-1-1

RECORDED NOV 24 1982 at 2:02 P.M.

12678