

PARCELS

298-8671

| | |
|------------|---------|
| 585.1-1-3 | 141 Ac. |
| 585.1-1-4 | 19 Ac. |
| 585.1-1-23 | 35 Ac. |

(A & B)

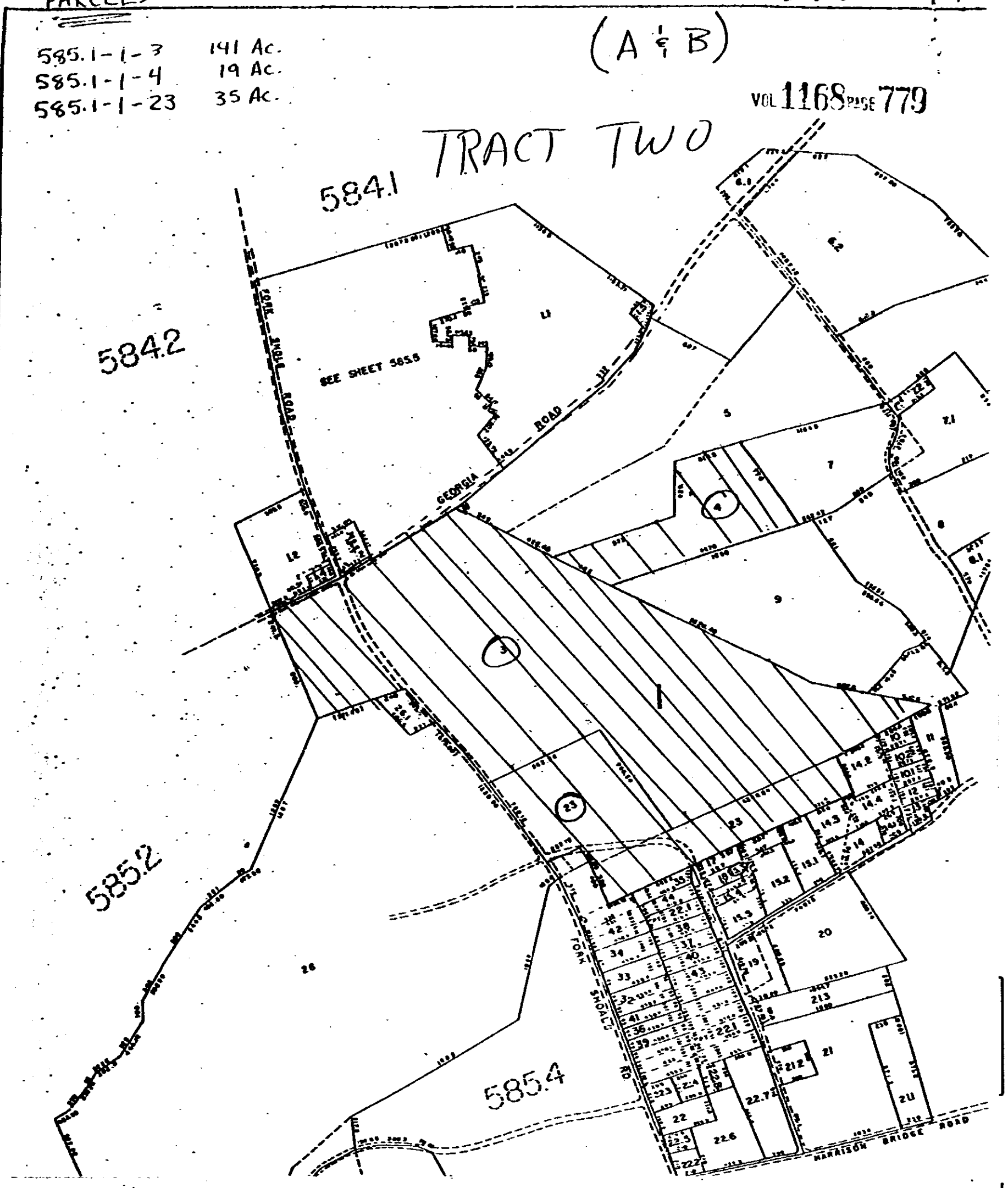
VOL 1168 PAGE 779

584.1 TRACT TWO

584.2

585.2

585.4



0779

4328 RV-2