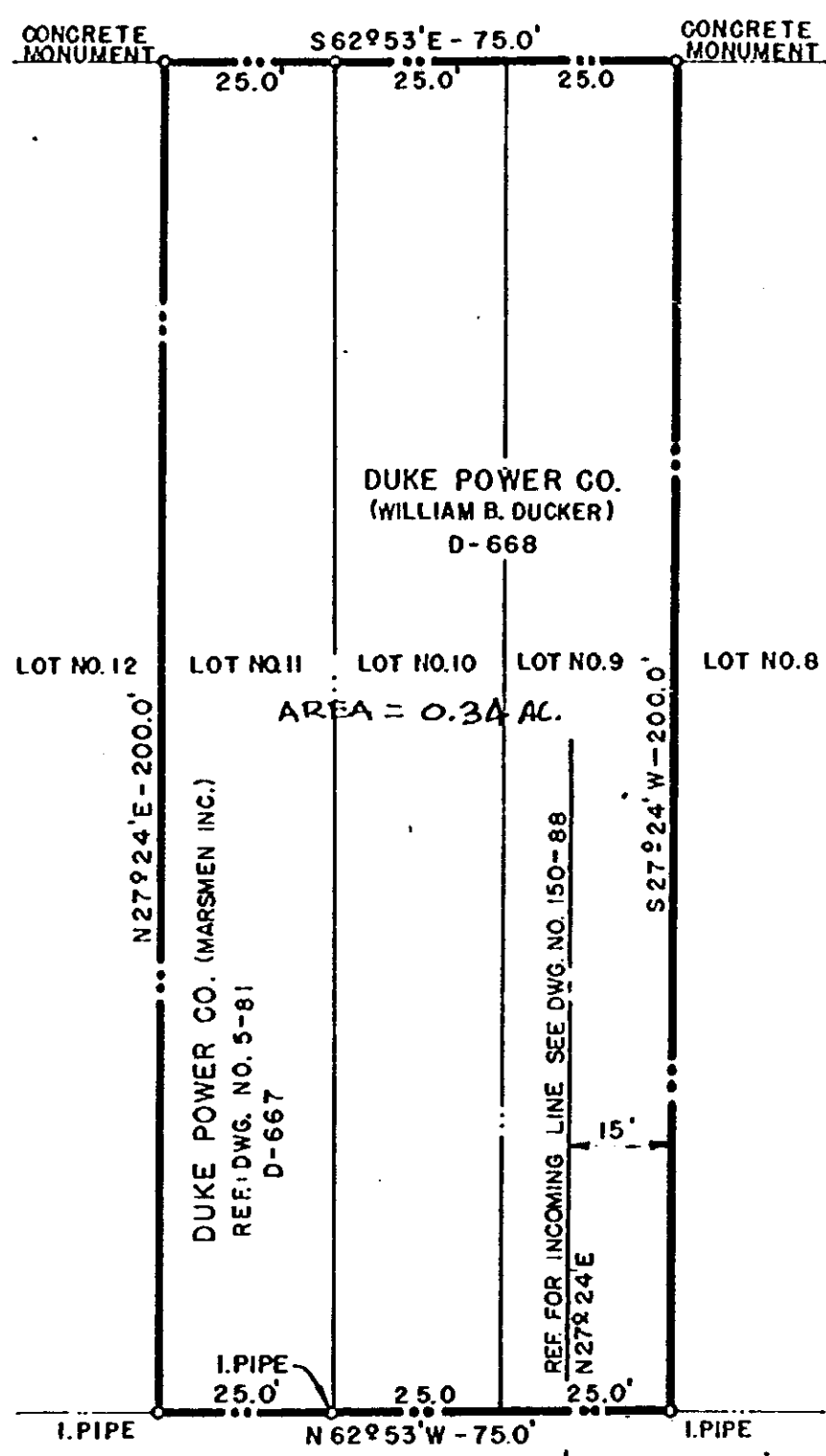
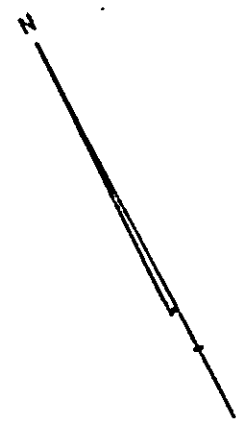


BOOK 1132 PAGE 425

BUNCOMBE ROAD

TO GREENVILLE →

SIDEWALK



AREA = 0.34 AC.

NOTE:
 PLOTTED FROM
 MAP MADE BY
 DALTON & NEVES, DATED
 MAY 1944, GREENVILLE, S.C.

REF:
 SEE PLAT BOOK O, PAGE 7
 GREENVILLE COUNTY REGISTRY

REF:
 SEE MISC. DWG. NO. 291, 150-88 & 52-129

NOTE: DEEDED TO O. KEITH
 PICKELSIMER & CHARLES
 R. PICKELSIMER 7/16/80.

NOTE:
 KNOWN AS
 SANS SOUCI RETAIL STATION
 (ADDED 1-19-50)

NOTE:
 CONCRETE MONUMENTS
 SET 1-19-50 ADDED 1-23-50
 FOR LAYOUT OF STRUCTURES SEE
 DWG 5-84

James F. Pacy
 S.C. R.L.S. No. 3298
 Duke Power Co.
 Charlotte, NC

DUKE POWER COMPANY
 SUBSTATION LOT
 ACQUIRED FROM
 WILLIAM B. DUCKER
 GREENVILLE, S.C.

SCALE: 1" = 30'
 BOOK NO. 297
 DEC. 16, 1949
 FILE NO. 5-82-A

6759

RECORDED SEP 2 1950
 at 2:04 P.M.

5
4
2
0.

4328 RV-2