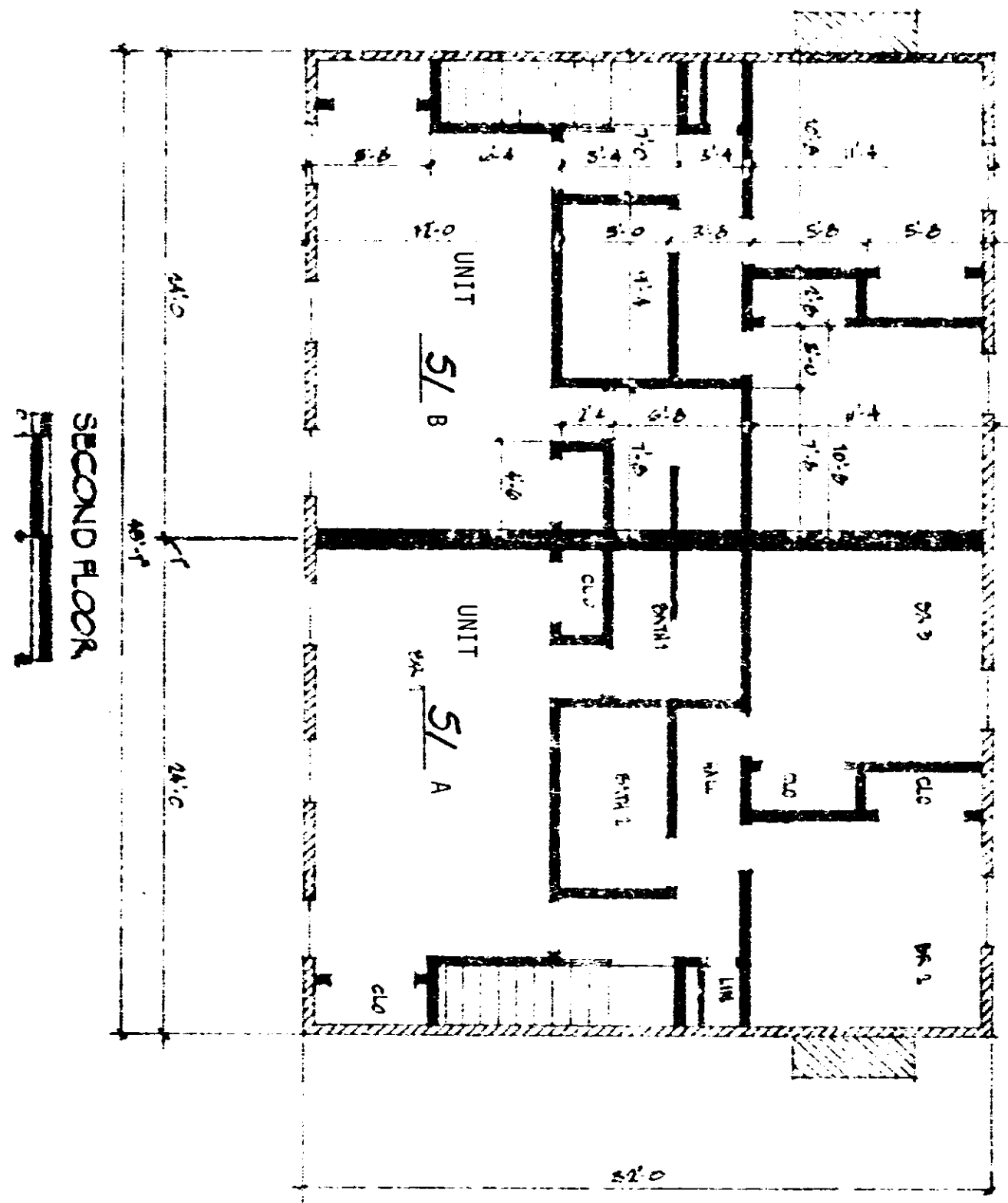


011110 10

LIMITED COMMON ELEMENTS



SECOND FLOOR

CERTIFICATE

I, Wade H. Barber, do hereby certify that these plans fully depict within reasonable construction tolerances the layout, location, letter identification and dimensions of the buildings and dwellings contained therein.

*Wade Barber*



4328 RV.2

0049