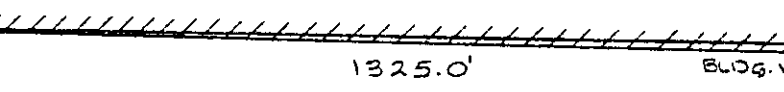


LO, INC. - WAREHOUSE



9.06 AC.

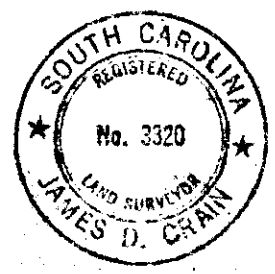
PORTION LOT X

WARD COAST LINE RAILROAD PROP.

VEY FOR
AST LINE RAILROAD
IN, SOUTH CAROLINA
MARCH 31, 1972

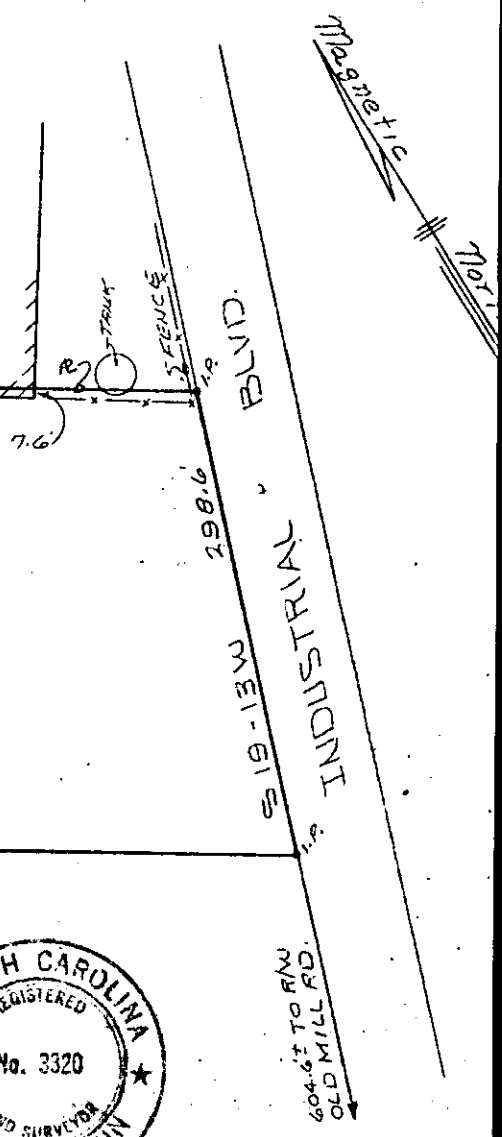
ENGINEERS & ARCHITECTS
E, SOUTH CAROLINA

395.1'



Plat and Deed Recorded December 19, 1972 at 5:32 P. M., # 17877

A-300



S 19-13 W 1/2 INDUSTRIAL BLVD.