

BIT PAVING -  
6" SLOPE TO  
#291 SIDEWALK

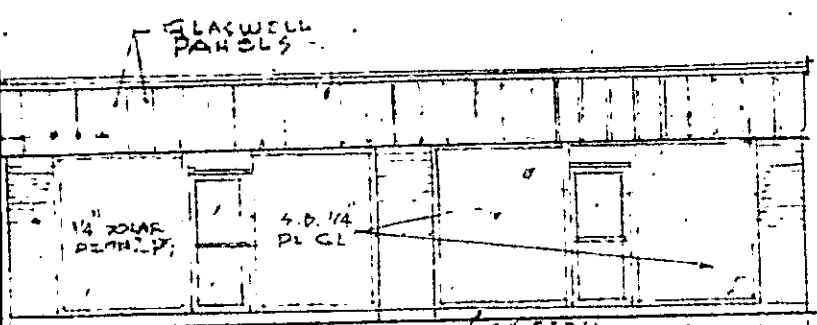
6" STEP

4 FB

# FLOOR PLAN

VOL 920 PAGE 185

3/8" = 1'-0"



6" STEP

CONC. FTG

# FRONT ELEVATION

0"

1/2"

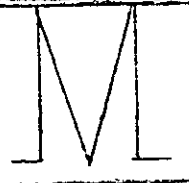
# PLUMBING FIXTURES -

- LAVATORY - A.S. NO. 4965.020 - I.I.E. - "RECALYM" - 20" X 18"
- WATER CLOSSE - A.S. 1 - 3089.014 Y.P. CHINA - COMPLY WITH
- ELECT HOT WATER HEATER - G.E. - 30 GALS (FOUND) G.L. LINED - NO. YSGF-32
- RED. CABINET - 14" X 18" W/ MIRROR DOOR - SURFACE MOUNTED - MOE NO. 1002
- DRINKING FOUNTAIN - G.E. #PT3 - ELECT. FLOOR TYPE

Plat Recorded July 12th, 1971 at 3:09 P. M. #1114

E BUILDINGS FOR  
FRANCIS  
ANTBURG DRIVE - GREENVILLE, S.C.

5620  
A1  
3 JUN 71



REVISION