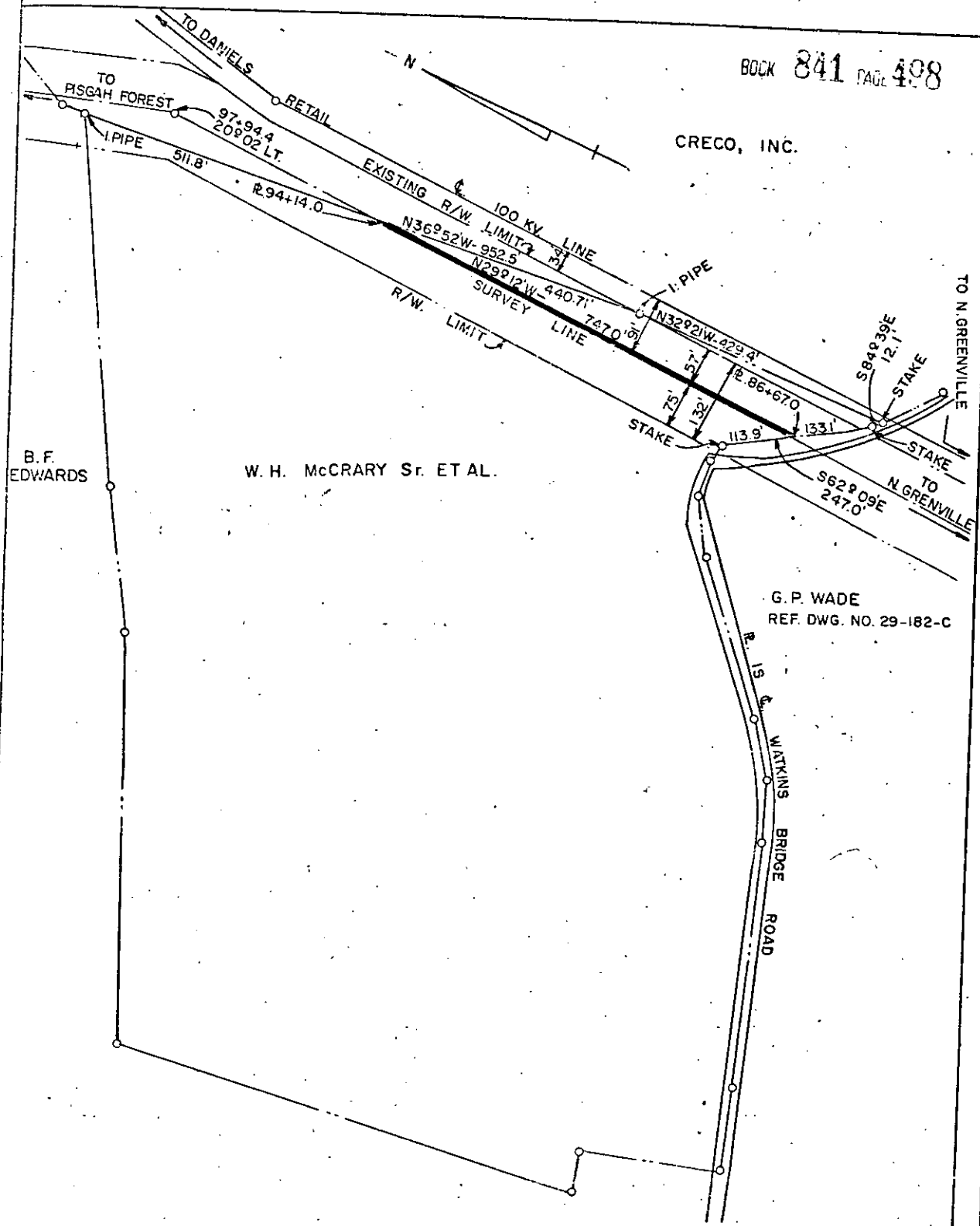


CRECO, INC.



DUKE POWER COMPANY
 NORTH GREENVILLE-PISGAH FOREST
 TRANSMISSION LINE
 CROSSING PROPERTY OF
 W. H. McCRARY Sr. ET AL.
 PARIS MTN. TOWNSHIP
 GREENVILLE COUNTY, S.C.

SCALE 1" = 200'
 BOOK NO. 1015

MARCH 1, 1968
 FILE NO. 37-115

Recorded April 8, 1968 At 3:52 P.M. # 26224