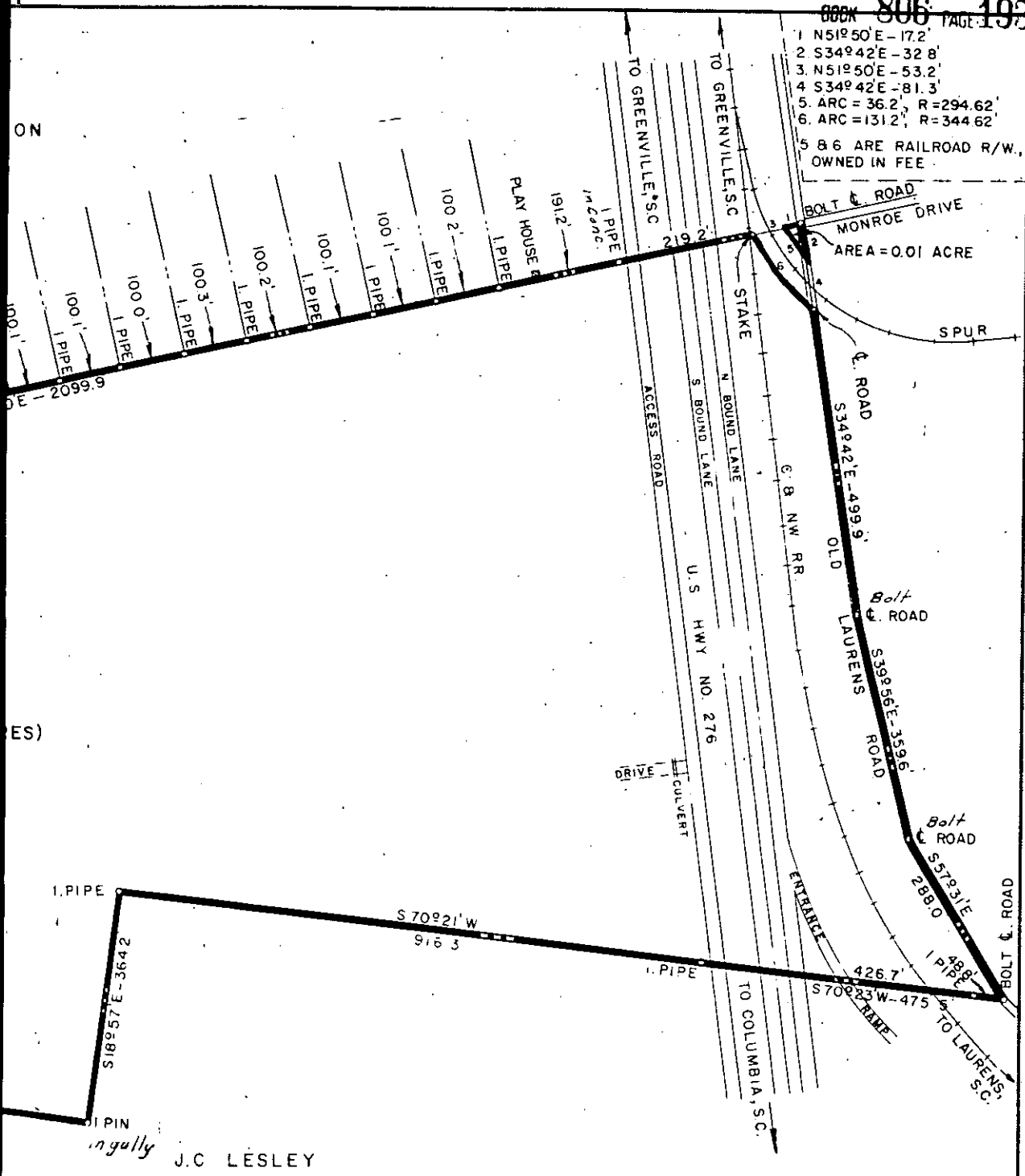


- 1 N51°50'E - 17.2'
 - 2 S34°42'E - 32.8'
 - 3 N51°50'E - 53.2'
 - 4 S34°42'E - 81.3'
 5. ARC = 36.2°, R = 294.62'
 6. ARC = 131.2°, R = 344.62'
- 5 & 6 ARE RAILROAD R/W, OWNED IN FEE



J.C. LESLEY

DUKE POWER COMPANY
 GREENBRIAR RETAIL LOT
 ACQUIRED FROM
 ALPHA TODD, ET AL.
 Near MAULDIN, S. C.
 AUSTIN TOWNSHIP
 GREENVILLE COUNTY

SCALE 1" = 200'
 BOOK NO. 892

AUGUST 9, 1966
 FILE NO. 156-86

Recorded September 16th., 1966 At 9:12 A.M. # 7549