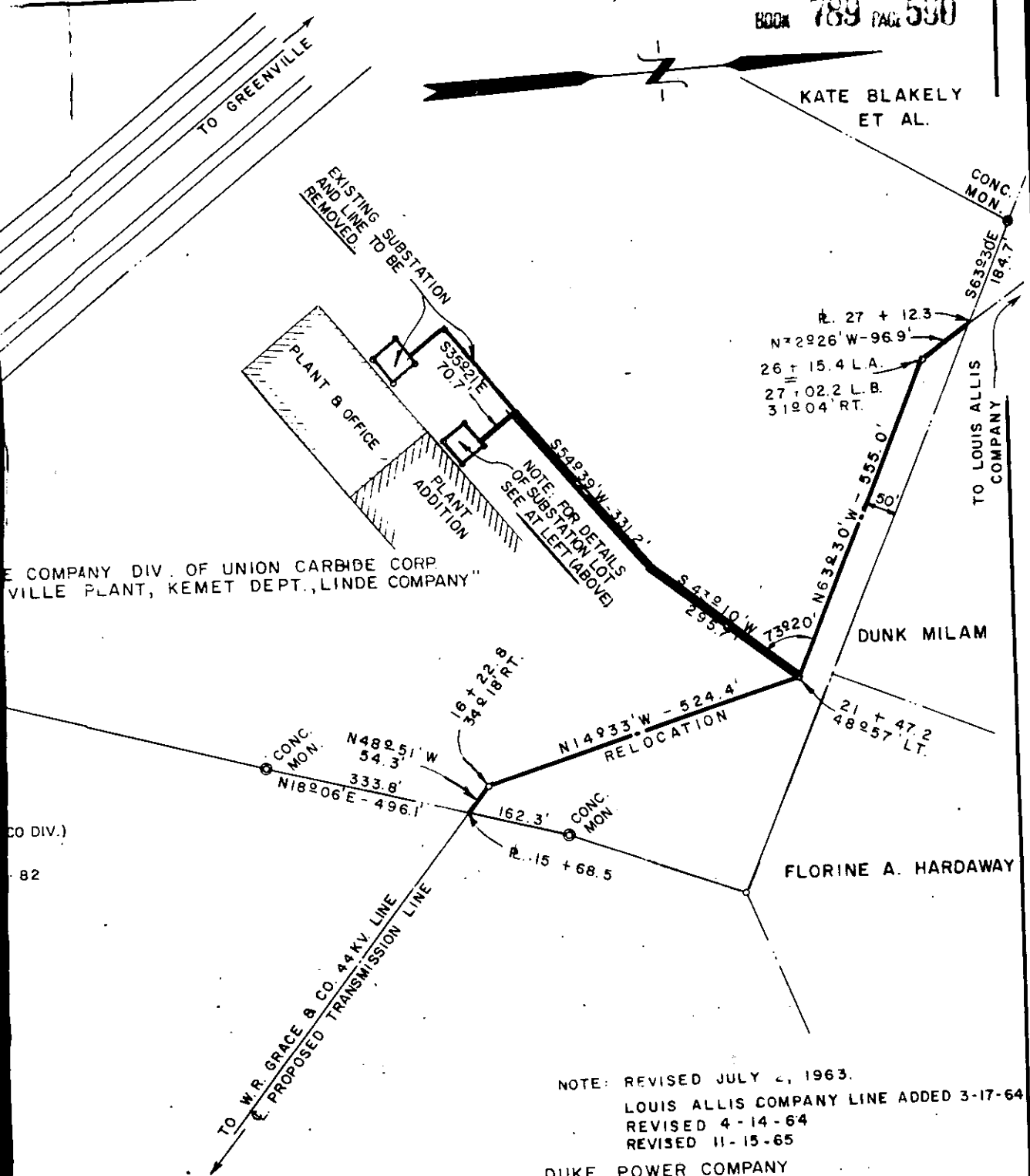


KATE BLAKELY ET AL.



... COMPANY DIV. OF UNION CARBIDE CORP.
... VILLE PLANT, KEMET DEPT., LINDE COMPANY"

CO DIV.)
82

NOTE: REVISED JULY 2, 1963.
LOUIS ALLIS COMPANY LINE ADDED 3-17-64
REVISED 4-14-64
REVISED 11-15-65

DUKE POWER COMPANY
SUBSTATION LOT
AND
TRANSMISSION LINE
TO SERVE

LINDE COMPANY DIV. OF UNION CARBIDE CORP.
"GREENVILLE PLANT, KEMET DEPT., LINDE COMPANY"
SIMPSONVILLE, S.C.
GREENVILLE COUNTY

SCALE: 1" = 200'
BOOK NO: 660 & 641

JUNE 17, 1963
FILE NO. 154-106

Recorded January 10th, 1966 at 9:30 A.M. #20320