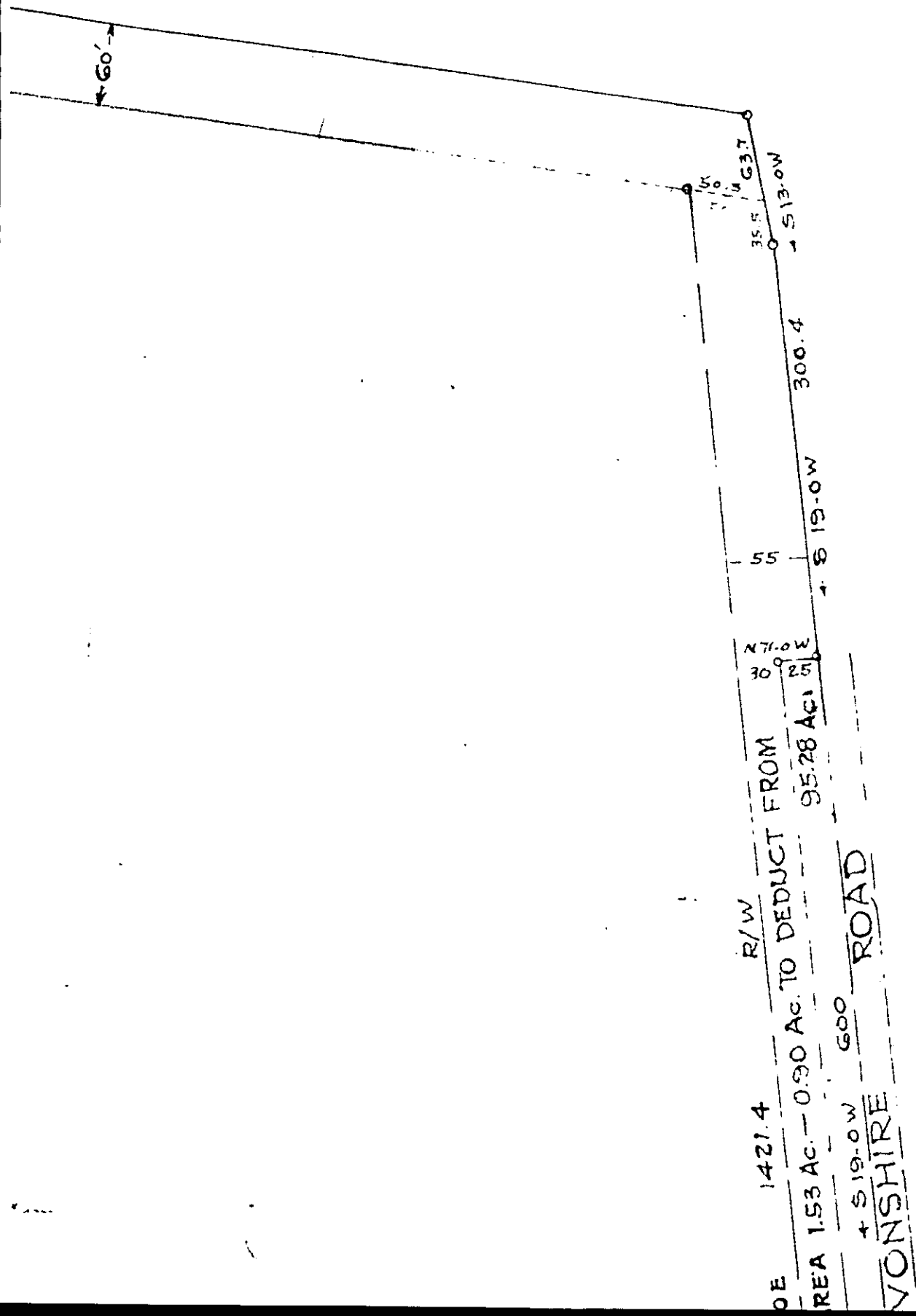


Y



OE 1421.4 R/W  
 REA 1.53 Ac. - 0.90 Ac. TO DEDUCT FROM  
 + S 19.0° W 600  
 VONSHIRE ROAD

N 71.0° E 30  
 95.28 Ac. 25  
 + S 19.0° W 300.4  
 35.5  
 63.7  
 S 13.0° W

60'