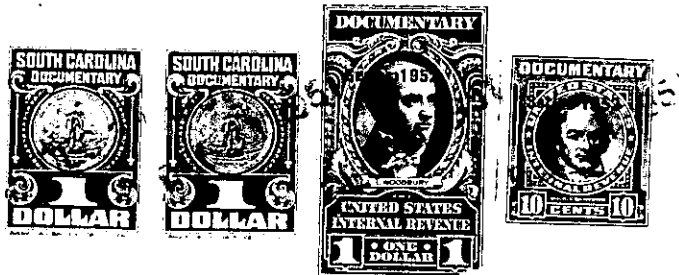


THE STATE OF SOUTH CAROLINA,  
COUNTY OF Greenville



FILED  
GREENVILLE CO. S. C.

DEC 31 2 02 PM '1931

KNOW ALL MEN BY THESE PRESENTS. That we, <sup>OLLIE FANNING SUWORTH</sup> Paul L. Wilreath and S. T. Turner, as Trustees, ..... in the State aforesaid, in consideration of the sum of ..... Six Hundred Sixty (\$660.00) ..... Dollars to us, as Trustees, ..... in hand paid at and before the sealing of these presents by J. D. Fortner ..... (the receipt whereof is hereby acknowledged), have granted, bargained, sold and released, and by these presents do grant, bargain, sell and release unto the said J. D. Fortner, his heirs and assigns,

all that piece, parcel or lot of land in Bates Township, Greenville

County, State of South Carolina, located about three miles north of Travelers Rest, S. C., on both sides of U. S. Highway No. 276 (Travelers Rest-Cessers Head Road), the same being shown and designated as lots no. 70, 47 and 37 on a plat of the property of the "Lannie L. Hunt Estate", plat made by H. L. Dunahoo, Surveyor, dated Nov. 15 & 16, 1951, and recorded in Flat Book AA, Page 134, S. C. Office for Greenville County, and having, according to said plat, which is hereby incorporated by reference, the following courses and distances, to wit:

COURSES AND DISTANCES FOR LOT NO. 70: BEGINNING at a point on the eastern side of U. S. Highway No. 276, and on the western edge of the G. & K. Railroad track, joint corner of lots 70 and 71, and running thence S 72-00 W 107 feet to a point, joint corner of lots 69 and 70 on said plat; thence N 26-00 W 312 feet to a point, joint corner of lots 70, 66 and 67; thence E 29-30 W 300 feet to a point on the southern edge of a drive way, joint corner of lots 70 and 64; thence N 64-40 E 755 feet to a point on the western edge of the G. & K. Railroad track, joint corner of lots 70 and 71; thence along the western edge of the G. & K. Railroad track with the railroad track as the line, 885 feet to the beginning corner, and containing 6.0 acres, more or less.

COURSES AND DISTANCES FOR LOT NO. 47: BEGINNING at a point on the western edge of a newly cut 36 foot street, joint corner of lots 47 and 48 on said plat, and running thence S 63-30 W 200 feet to a point, joint rear corner of lots 47 and 48; thence N 26-15 W 100 feet to a point, joint rear corner of lots 46 and 47; thence E 63-30 E 200 feet to a point on the western edge of said newly cut street, joint corner of lots 46 and 47; thence along the western edge of said newly cut street, S 26-15 E 100 feet to the beginning corner.

COURSES AND DISTANCES FOR LOT NO. 37: BEGINNING at a point on the eastern edge of a newly cut 36 foot street, joint corner of lots 36 and 37, and running thence N 63-30 E 200 feet to a point, joint rear corner of lots 36 and 37; thence N 26-15 W 100 feet to a point, joint rear corner of lots 37 and 38; thence S 63-30 W 200 feet to a point on the eastern edge of said newly cut street, joint corner of lots 37 and 38; thence along the eastern edge of said newly cut street, S 26-15 E 100 feet to the beginning corner.