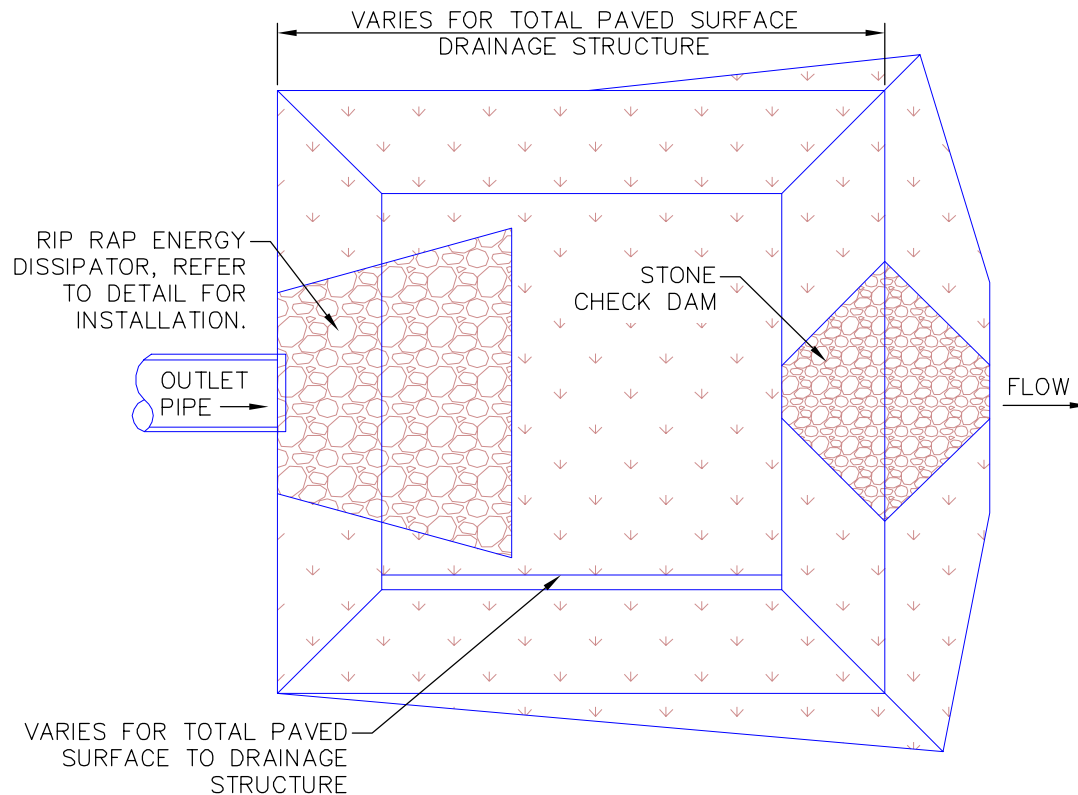


SURFACE AREA WILL BE STABILIZED DURING THE CONSTRUCTION AND GRASS ESTABLISHMENT PROCESS.

TYPICAL SECTION

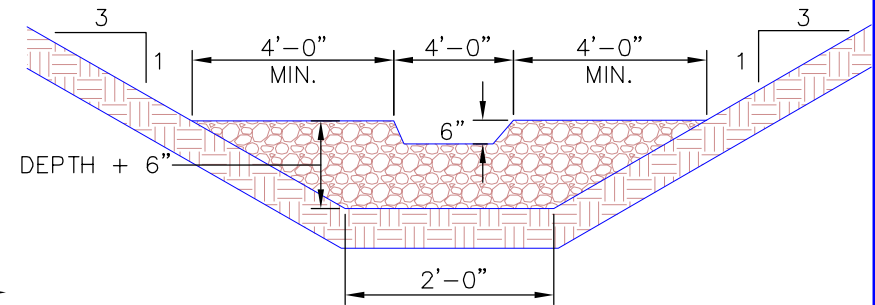


TYPICAL PLAN VIEW

STILLING BASIN REQUIRED VOLUME $VOL = L \times W \times 0.083$
 L = PAVEMENT LENGTH (FLOWING TO STRUCTURE)
 W = PAVEMENT WIDTH (FLOWING TO STRUCTURE)
 $0.083 = 1" \text{ RAIN} / (12"/1')$

NOTE: THE LENGTH, WIDTH, AND DEPTH OF THE STRUCTURE MAY BE ADJUSTED AS REQUIRED TO MATCH THE SITE CONDITIONS, AS LONG AS THE MINIMUM VOLUME REQUIRED FOR THE LENGTH OF IMPERVIOUS PAVEMENT THAT FLOWS TO EACH WATER BASIN..

| LENGTH OF ROAD (BASED ON 20' WIDTH) | MIN. REQUIRED VOL (C.F.) |
|----------------------------------------|-----------------------------|
| 100' ROAD | V = 166 C.F. |
| 200' ROAD | V = 323 C.F. |
| 300' ROAD | V = 498 C.F. |
| 400' ROAD | V = 664 C.F. |
| 500' ROAD | V = 830 C.F. |
| 600' ROAD | V = 996 C.F. |



SECTION THROUGH STONE CHECK DAM



**Greenville County
Storm Water Management**

GRASS STILLING BASIN

STANDARD DRAWING NO. **WQ-23A**

NTS

APPROVED BY: _____
GREENVILLE COUNTY STORM WATER MANAGEMENT

January 2018
DATE